

Janich & Klass Computertechnik GmbH

Installation of DPU Server and DpuScan Client

Version 1.00
Date 12.Feb.2008

List of changes:

Change	Author	Date
Written	ak	04.Feb.2008
revised	hwsk	12.Feb.2008

System Requirements (for DpuScan and for DpuServer)	4
Installation of DPU Server and loading the licenses	4
Installation of DPU Clients	8

This document describes in brief the installation process of the DpuScan Client Server Version. The installation consists of two parts

- a DpuScan Server package (DpuServer.EXE)
- a DpuScan Client package (DpuClient.EXE)

System Requirements (for DpuScan and for DpuServer)

Windows 2000 SP4
Windows 2003
Windows XP SP2
Windows Vista

Internet Explorer 6.1 (at least) must be installed
Microsoft Installer 3.1 (will be installed automatically)

512MByte of System RAM
2 GByte of free disk space

Installation of DPU Server and loading the licenses

The server component should be installed on a machine which is neither a scan nor an index station. On the server machine here called "DPUSERVER" please install the Server package and mount the server dongle to this device.

The DpuServer installation consist of

- the .net 2.0 if not installed yet
- the MS SQL-Server Express
- the DpuServer service

After installation start the DpuServer Settings from the Control Panel:

DpuServer settings

Central server settings | Version

Logging

Path:

File mask:

Encoding:

Maximum file size: 10 KB

Maximum file count: 2

☐ Output server messages to debug channel

☐ Output server messages to logging file

Database connection

Provider:

Data source:

Integrated security:

Initial catalog:

Provider=SQLOLEDB;Data Source=.\DPUSERVER;Integrated Security=SSPI;Initial Catalog=DPUSERVER

Security

☐ Secure transmission

☐ Secure repository

License management

License manager ...

Default settings

Status central server

Test

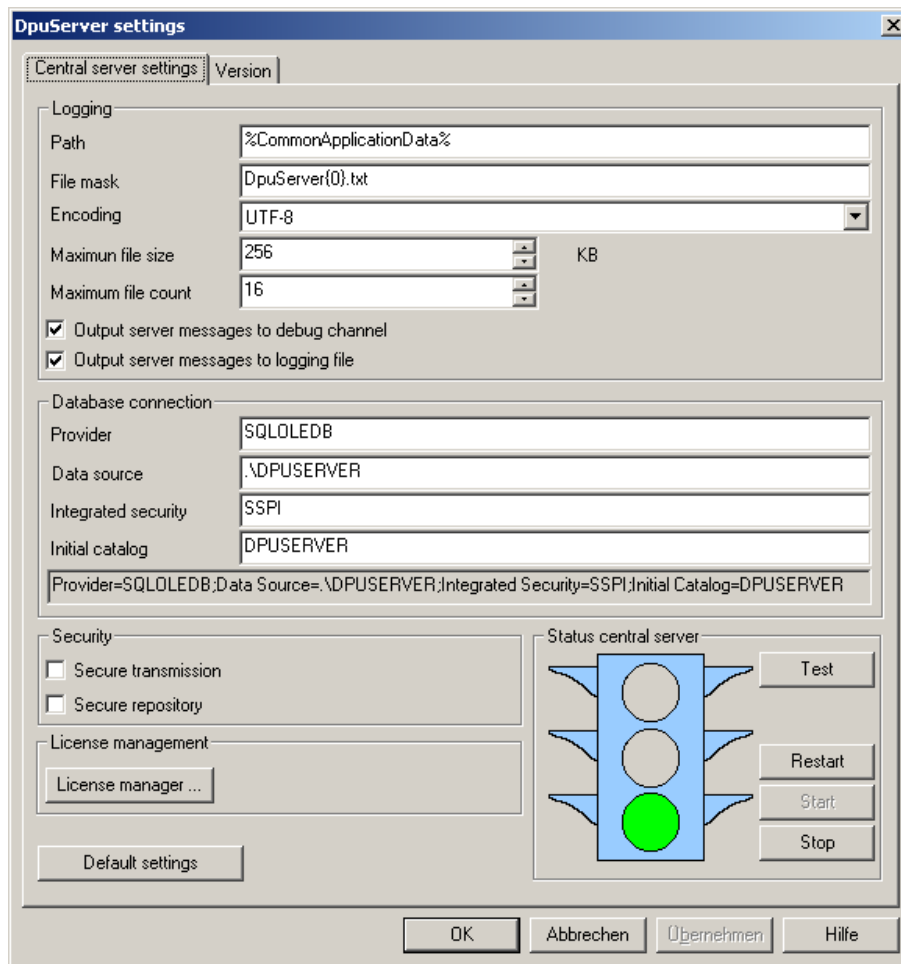
Restart

Start

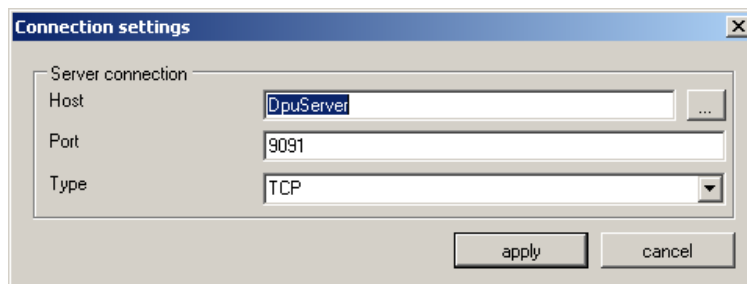
Stop

OK Abbrechen Übernehmen Hilfe

Note: If the settings for the central server are missing, as shown above, please click the button **Default** settings. Afterwards the dialog should show this settings:



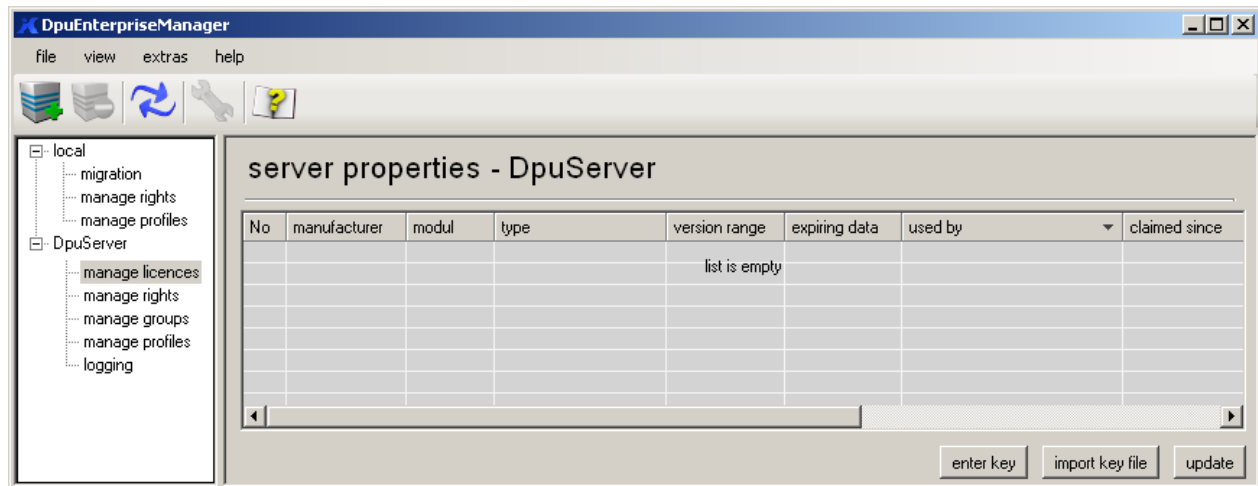
Now clicking the **License manager** For the host the machine name or the IP address can entered as well. At the moment please do not change Port and Type information.



For the host the machine name or the IP address can entered as well.

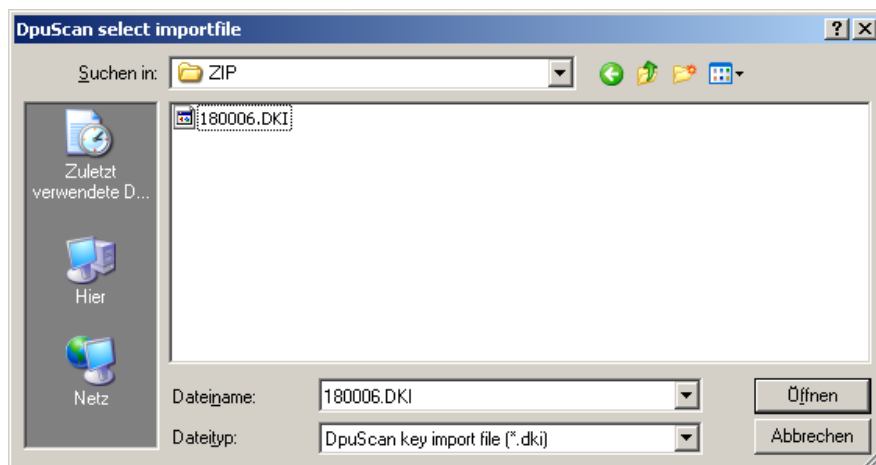
Note: At the moment please do not change Port and Type information, it must be TCP/IP via Port 9091. Also make sure this port are not blocked by a firewall.

Once the server machine is found, the DpuEnterpriseManager comes up:

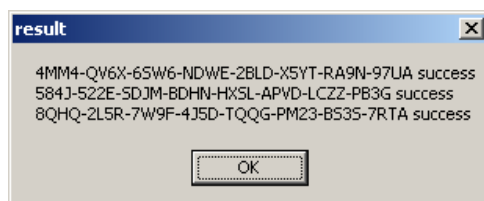


Note: If the server couldn't be reached, please close this dialog, **restart** the server then click on the License manager again.

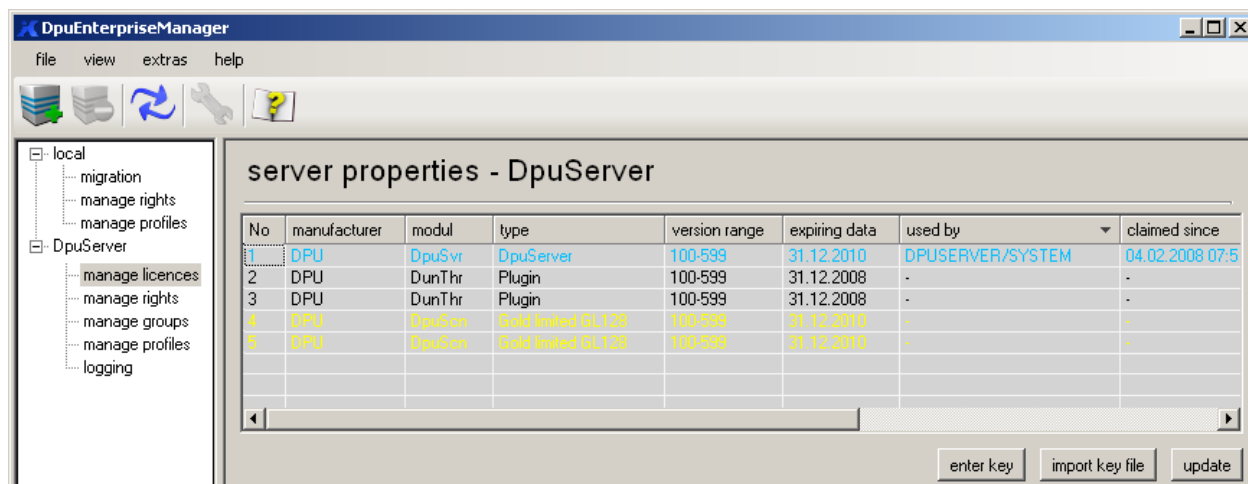
Now load the keys by pressing the button **import key file** and open the DKI file which is part of the shipment.



If the import succeeds a message is displayed:

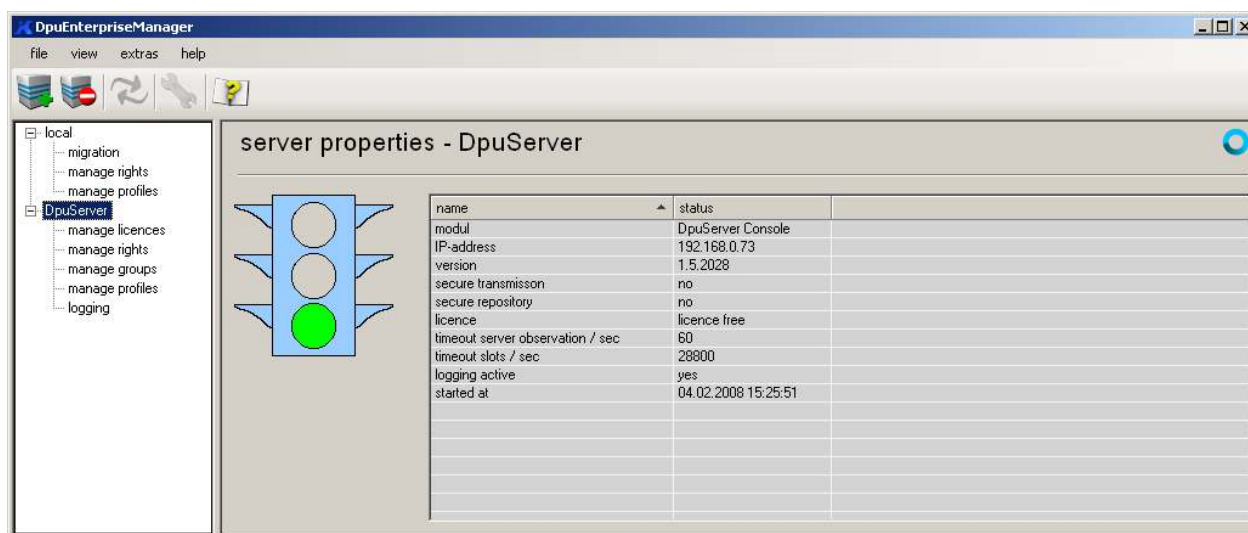


This procedure ends up with the list of licenses, usually the server license (light blue), one or more DpuScan licenses (blue, green, gold or black, like the colour of the formerly used dongle) and, if part of the shipment, some Plugins (black) .



Note: It takes about one minute for the server to capture its own key, so the column entry **used by** will be filled a little bit later.

Selecting the node DpuServer shows the server properties, which should be now like this:



Installation of DPU Clients

In a secondary step now install the DpuClient to all machines which should be part of the solution, i.e. all scan and index stations. For this sample we assume two scanners "Scanner 2" and "Scanner 2" and three Index stations "QSI 1", "QSI 2" and "QSI 3".

With this package DpuScan and the DpuClient will be installed. The DpuClient manages the storage and rights issues for DpuScan. So it works as a "local server" and the settings dialog can be reached via the control panel. It looks a little bit similar to the server's dialog:

DpuServer settings

Local server settings | Version

Logging

Path: %commonapplicationdata%

File mask: DpuLocal{0}.txt

Encoding: UTF-8

Maximum file size: 1000 KB

Maximum file count: 5

☐ Output server messages to debug channel

☐ Output server messages to logging file

More ...

Remote server

☒ Activate

Host: DPUSERVER

Port: 9091

Connection type: TCP

☒ Adjust on start

Test

Security

☐ Secure repository

Local server status

Test

Flush

Restart

Start

Stop

Default settings

OK Abbrechen Übernehmen Hilfe

By default the Local Server tries to reach a Central Server called DPUSERVER. If you installed this part to another PC please select it here as **Remote Server**. Pressing the button **Test** in this frame should up end with this message:

DpuCtrlPanel

Ferner Server "DpuServer Console" auf DPUSERVER Version 1.5.1331 , über unsichere Verbindung, Lizenzierung ok

OK

Once the server is **activated** the option **Adjust on start** causes the client to load the published profiles from there.

Note: Profiles and sub profiles can be published by the DpuEnterpriseManager.