

We capture the future.

Janich & Klass



# DpuEnterpriseManager **DpuServer**

**Supplement to the DpuScan Reference Manual**



## Copyrights

© 1997 to 2010 J&K Imaging, Marietta/USA and Janich & Klass, D-Wuppertal.

All rights reserved. Printed in Germany.

The information contained in this documentation is the property of J&K Imaging, Marietta and Janich & Klass, Wuppertal. Neither receipt nor possession hereof confers or transfers any right to reproduce or disclose any part of the contents hereof, without the prior written consent of J&K Imaging, Marietta and Janich & Klass, Wuppertal.

## Trademarks

The DPU logo is a registered trademark of Janich & Klass, Wuppertal. DpuScan is a trademark of J&K Imaging, Marietta/USA. All other product names and logos are trademarks or registered trademarks of their representative companies.

## Disclaimer

The instructions and descriptions in this manual were accurate at the time of this manual's printing. However, we reserve the right to alter the description and/or the product at anytime without prior notice.

J&K Imaging and Janich & Klass assume no liability for damages incurred directly or indirectly from errors, omissions, or discrepancies between this manual and the product.

## Actuality

It may happen that a more recent version of this manual for DpuScan is available for download from the Internet. Therefore, it is recommended that you should compare the version by means of the date printed on this page with the version on the Internet. You should use the most up-to-date version of the manual.

The Internet version of this annex to the DpuScan Reference Manual is found on the Web at the following address:

<http://www.jkimaging.com/pdf/DpuEnterpriseManager-Manual.pdf>

© 2010-2017 Janich & Klass Computertechnik GmbH, Wuppertal, Germany

13 January 2017

## Table of Contents

1	BRIEF DESCRIPTION	5
2	OPERATING INSTRUCTIONS	6
2.1	<b>Managing the Local Server</b>	<b>6</b>
2.1.1	Local Status	6
2.1.2	Migration of Configuration Data	7
2.1.3	User Rights Management	8
2.1.4	Profile Management	10
2.2	<b>Manage DpuServer</b>	<b>13</b>
2.2.1	DpuServer Status	13
2.2.2	Managing Licenses	14
2.2.3	User Rights Management	17
2.2.4	Group Management	18
2.2.5	Profile Management	21
2.2.6	Logging	22
3	COMMAND LINE PARAMETERS	23

# 1 Brief Description

DpuEnterpriseManager is a tool for managing local configuration data on a DpuScan and for managing profiles and licensing for several DpuScan station by one or more DpuServer.

Managing tasks are

**for the LocalServer**

- Migration of configuration data from earlier versions of DpuScan
- User rights management
- Profile management

**for the (remote) Server**

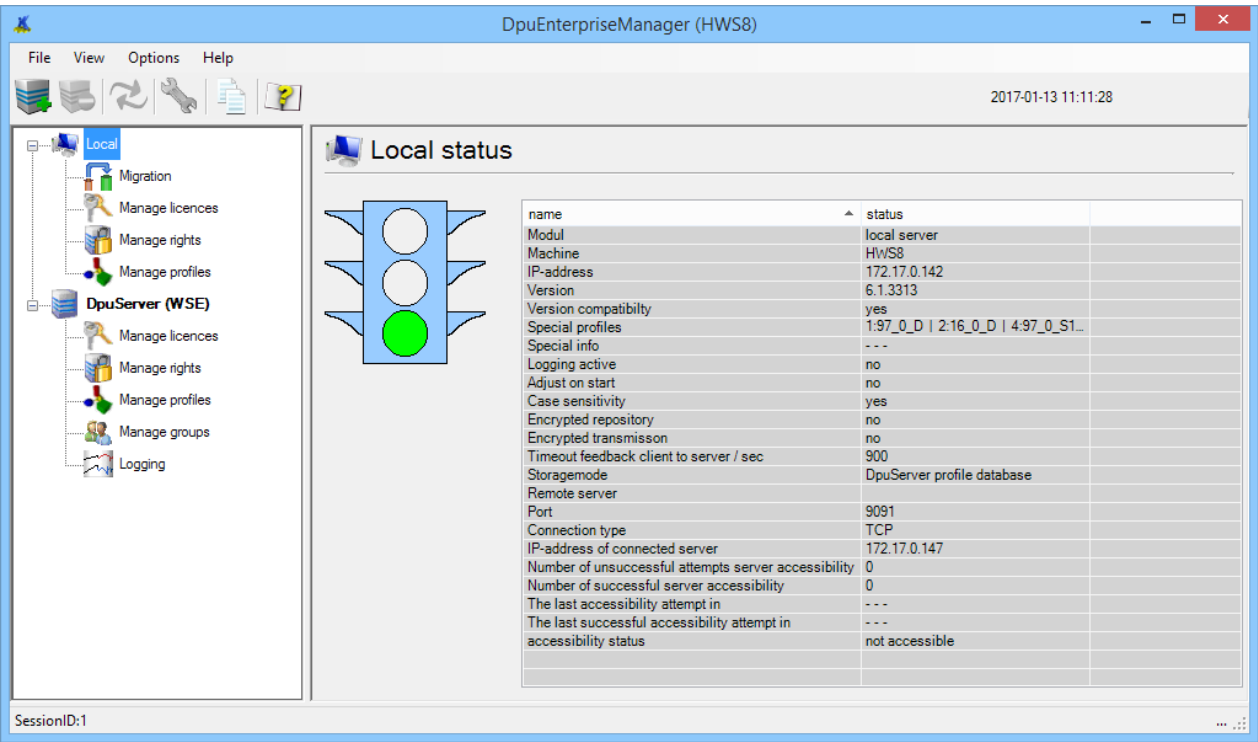
- License management
- User rights management
- Group management
- Profile management
- Logging

## 2 Operating Instructions

The configuration pane of the program shows a list of local storage and one or more DpuServer. Below each group there are control items for management tasks.

### 2.1 Managing the Local Server

#### 2.1.1 Local Status

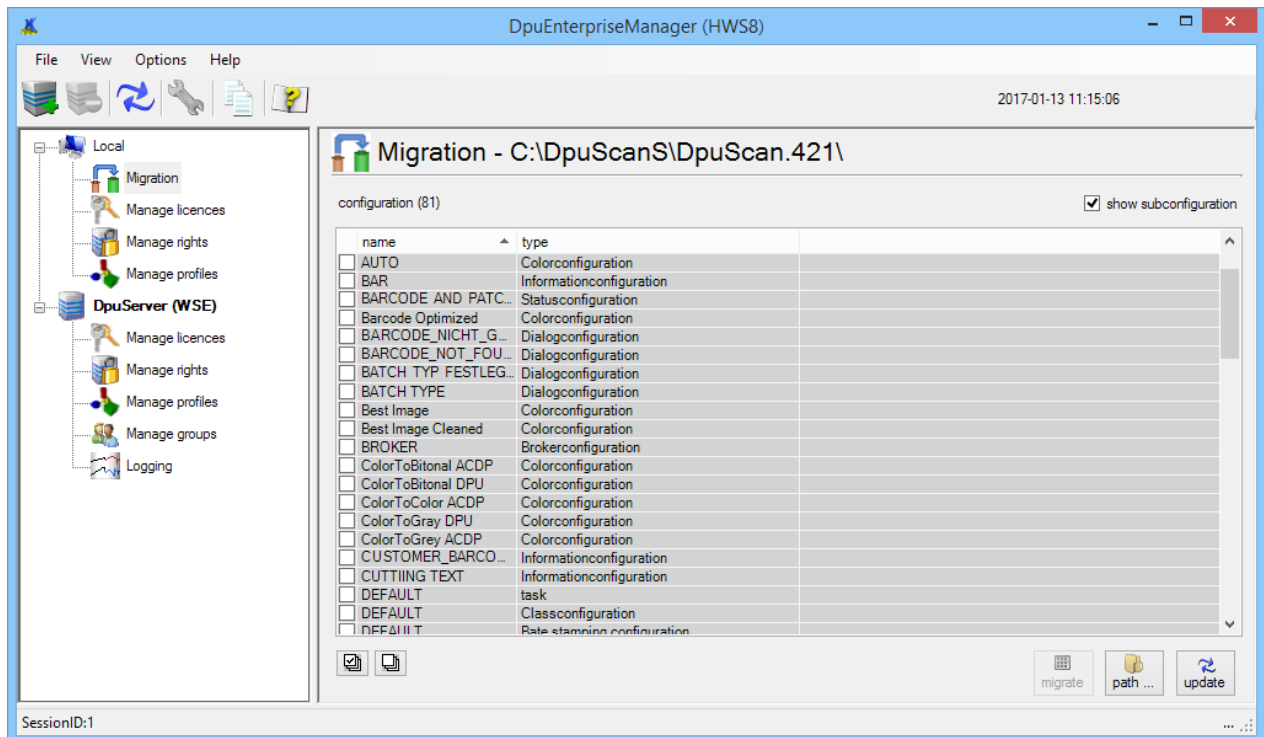



The page shows traffic lights indicating the general operating state of the service for local Profile storage.

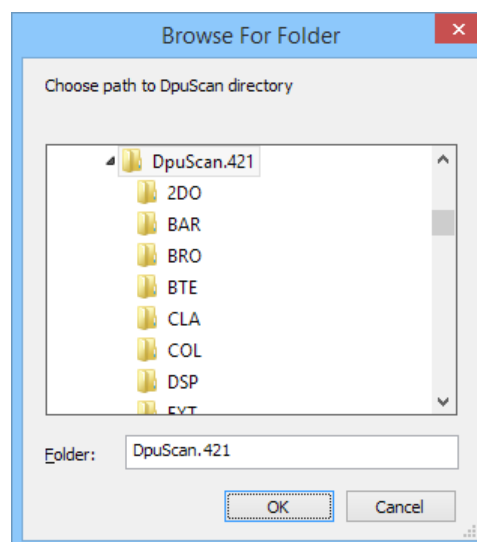
- Green**
- The service is running and accessible.
- Yellow**
- The service is about to start. In that phase reading parameter info.
- Red**
- The service is not operating.

### 2.1.2 Migration of Configuration Data

With Migration, configuration data of older DpuScan versions can be imported into the current local Profile data base. By the time only configuration data of DpuScan 4.21 and 4.11 can be imported.




The display shows the currently selected path, where old configuration data is stored, ready for migration. By hitting **Path** or the button  the source path can be changed.



**Hint:** The **OK** will only go active after having selected a valid source path holding DpuScan (4.21) configuration data.

Configuration data from the selected folder is presented for further subselection. Any configuration part selected by a checkmark will be imported, unselected parts will not be imported. The buttons



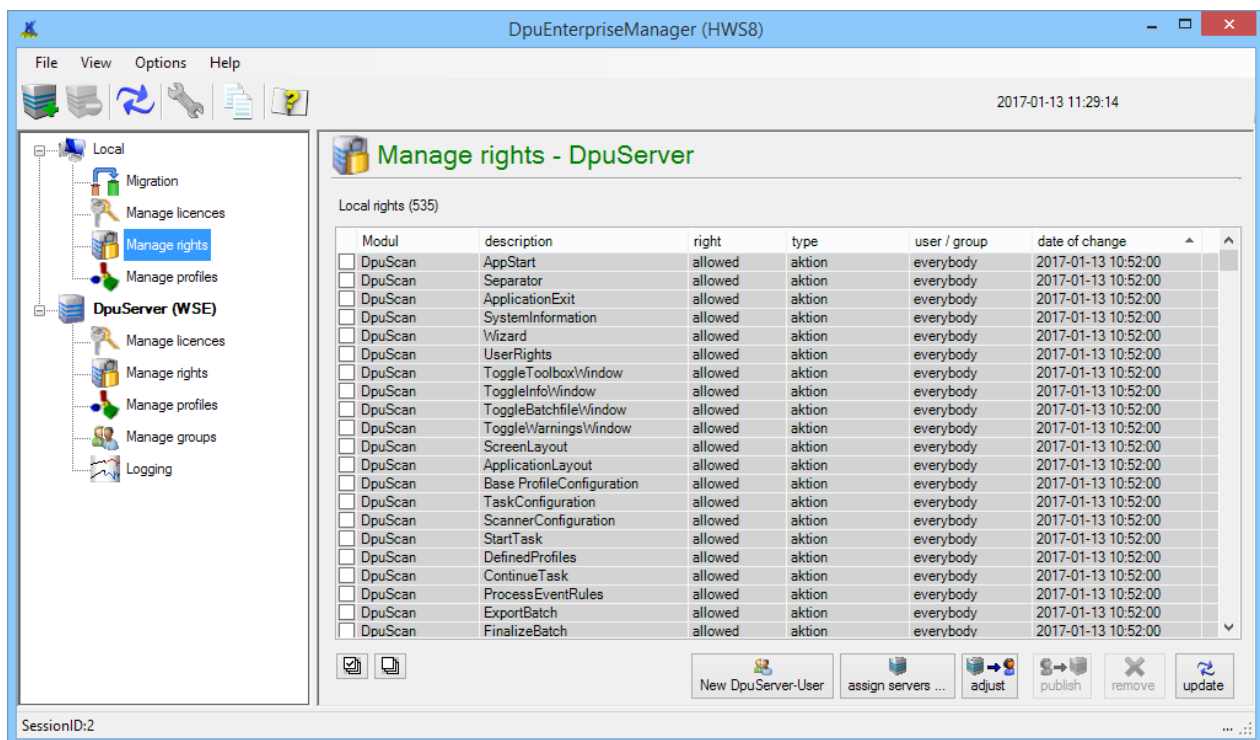
set checkmarks to all and  removes checkmark from all configuration items.

If at least one configuration part is selected button **Migrate** goes active, ready for starting the migration. **Migrate** will import the data into the local Profile base.

The checkmark ☐ show subconfiguration removed will only show .2DO configurations. 2DO configurations are the base for a complete DpuScan 4.21 scan profile. Migrating a 2DO will import all dependent partial configurations although not show and not selected.

## 2.1.3 User Rights Management

**Manage Rights** shows all the user rights for DpuScan. The title also shows the name of DpuServer with which profile data is exchanged.






### 2.1.3.1 Columns

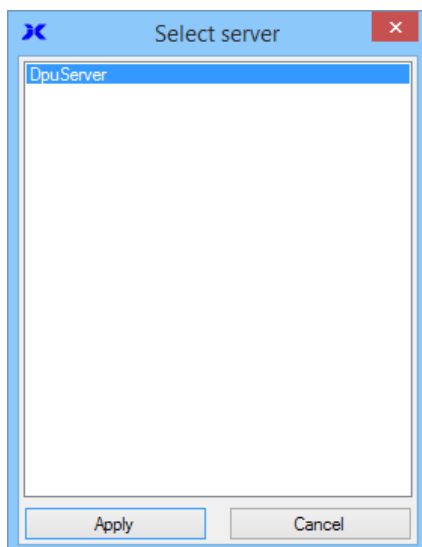
By the time only rights for DpuScan and DpuJobHandler can be configured.

<b>Module</b>	name of the program (-module)
<b>Description</b>	gives brief information on the rights to control
<b>Right</b>	allowed / not allowed
<b>Type</b>	internal DpuScan command (action) or task Profile
<b>User/Group</b>	shows the selected personal
<b>Date...</b>	shows the date of last change

### 2.1.3.2 Management Tasks

#### Assign Server

... or button  will open up the server selection dialog.

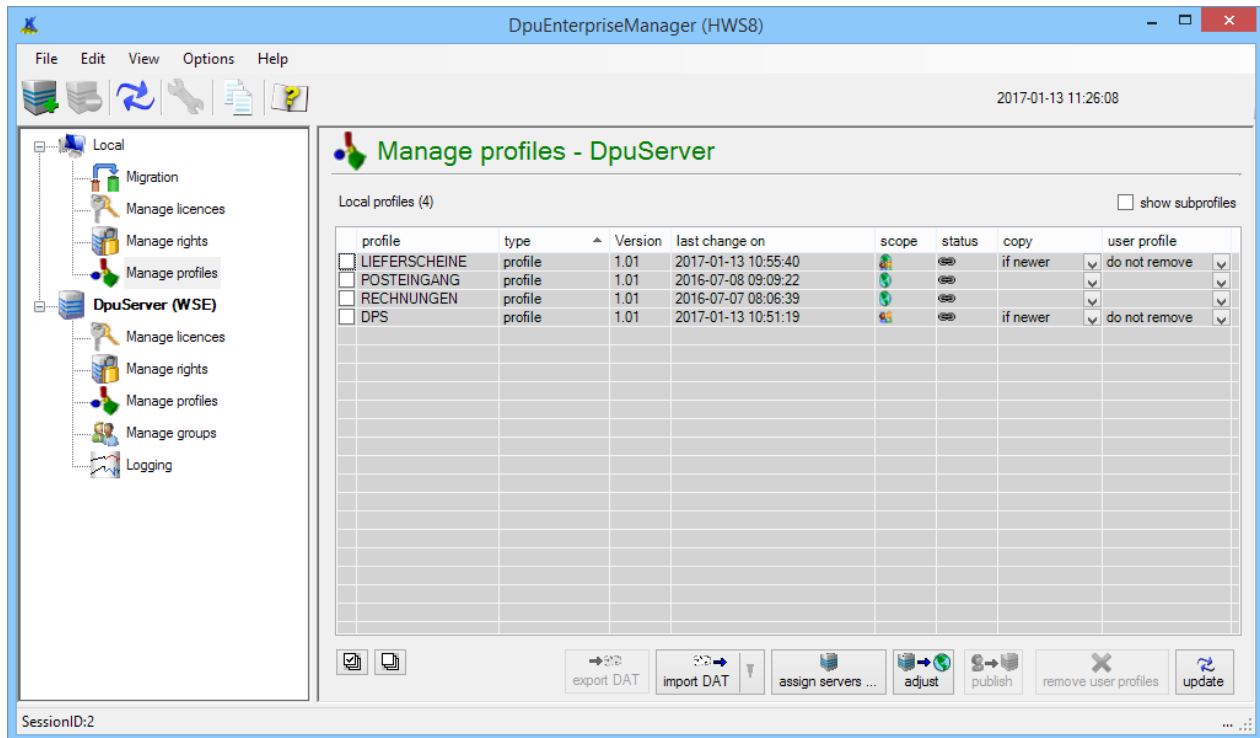


Only those Servers will be shown for selection that are already presented in the tree view.

<b>Adjust</b>	will copy user rights stored DpuServer to the local Profile base.
<b>Publish</b>	will copy locally made changes to user rights management to DpuServer. For publishing, only those rights will move DpuServer that are marked.
<b>Remove</b>	will remove (delete) selected rights from the local Profile base. Normally there is no need to remove any rights. The rights should only be change between allowed / not allowed.
<b>Update</b>	will update the list of rights, to show changes made by some other instance.

### 2.1.4 Profile Management

**Manage Profiles** shows all profiles existing in the local data base. Profiles can be copied from the DpuServer (adjust), copied to DpuServer (publish) or deleted from the local Profile base.



#### 2.1.4.1 Columns

Columns **Profile**, **Type** and **Version** characterize a DpuScan Scanning Profile. If ☒ **show subprofiles** is marked, also subprofiles will be listed. Subprofiles show a different name in column **Type**.

##### Last Change

will show the date of the last modification made to the profile.

##### Scope

shows where the profile is stored.



the profile / subprofile is stored locally in user scope and in the global scope



the profile / subprofile is stored in user scope only



the profile / subprofile is stored on global scope only

##### User



means, the Profile is stored locally for the currently logged-in user only. Profiles are stored per user if

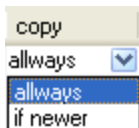
- a global profile is modified by the user
- the user generates a new profile

**Global**

means, the Profile is available is available to all users on the local computer, or is made globally available by DpuServer to all computers and users.

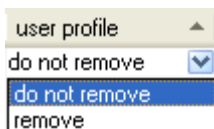
**Status**

shows whether a subprofile is bound to a profile  or not .

**Copy**

selects how profiles are handled when new configuration data is moved from DpuServer to local Profile base:

- **always** will overwrite locally stored configuration data by those moved from DpuServer
- **if newer** will only overwrite locally stored configuration data if DpuServer data is newer.

**User Profile**

selects whether a Profile or Subprofile that is removed from or changed at the global scope (from DpuServer) should be removed from the user's data base.

- **do not remove** will keep the user's copy of the Profile
- **remove** will delete the globally deleted/changed Profile from the user's Profile base


**2.1.4.2 Management Tasks****Export DAT**

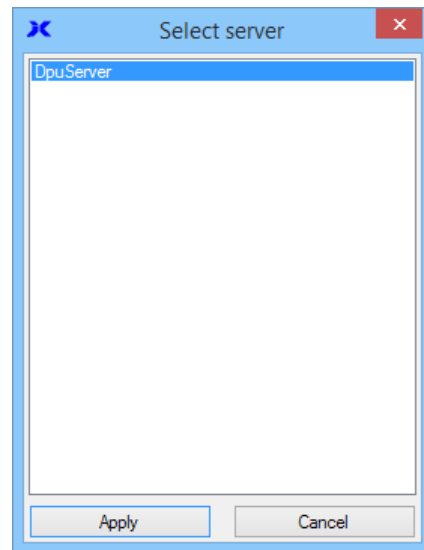
will pack the selected Profiles into a single file. This file can be transferred to other Scan Stations (if no DpuServer is used), can be archived or can be send for support purposes.

**Import DAT**

will import Profiles from other another station to the local Profile base if no DpuServer is used.

## Assign Server

... or button  will open up the server selection dialog



Only those Servers will be shown for selection, that are already presented in the tree view.

## Adjust

will copy Profiles from the selected DpuServer to the local data base. Copying will respect rules set up in [2.2.4 Group Management](#)

## Publish

will copy selected local Profiles to the global data base of the DpuServer. If the Scanstation is not configured to connect to DpuServer then publish will copy Profiles to the global local Profile by to make these Profiles available to all users on the local computer.

**Hint:** Only those Profiles and Subprofiles can be published that are stored in the user area of the local Profile base. For Subprofiles, it is now allowed to change the control items **Copy** and **User Profile**.

## Remove

will delete Profiles from the user's Profile storage. If the scan station is not configured to connect to DpuServer, Profiles are also removed from the local global Profile storage.

## Update

will show changes made to the local Profile storage made by some other local instance or by transferring new or changed Profile data from DpuServer.

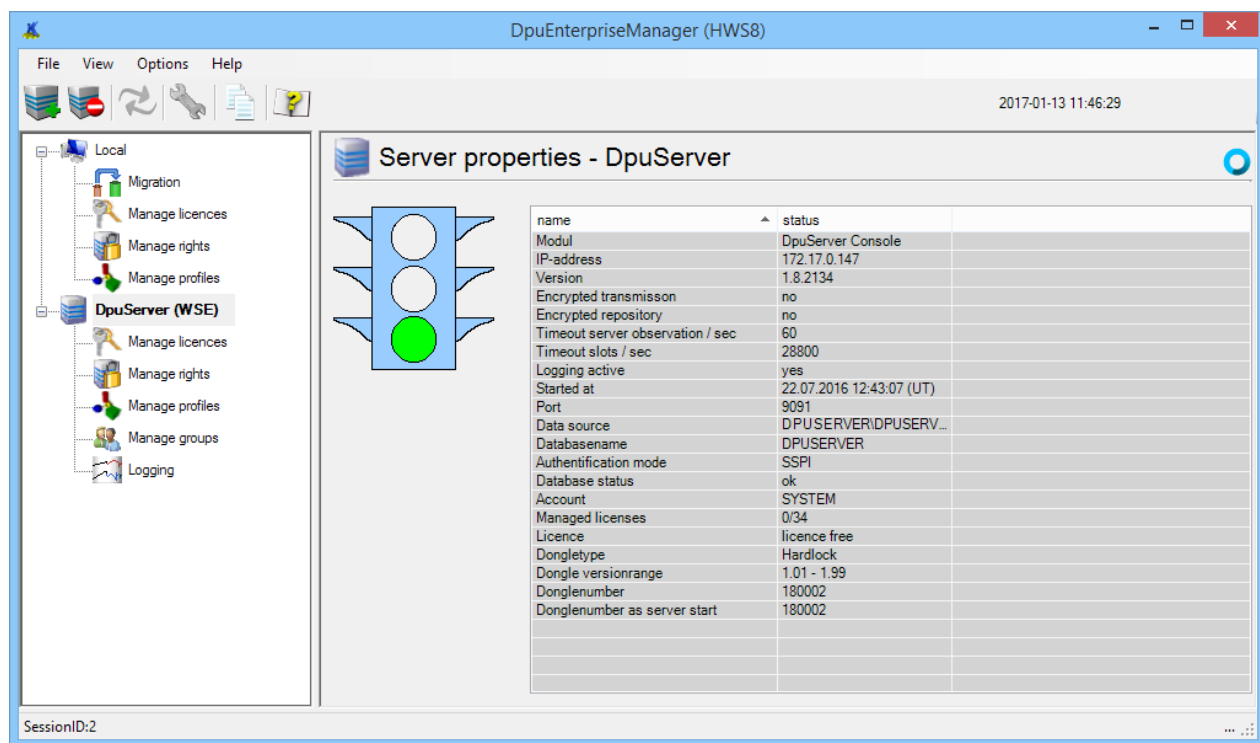
## 2.2 Manage DpuServer

The DpuEnterpriseManager can manage one or more DpuServer. In normal case, there is only one of them.

DpuEnterpriseManager will show a branch for each DpuServer selected for management with the name of the server. For each server there are management branches

- manage license
- manage rights
- manage groups
- manage profiles
- logging

### 2.2.1 DpuServer Status



Selecting the server status page shows status information for the selected server. The page shows traffic lights indicating the general operating state.

- Green light** DpuServer is running and accessible.
- Yellow light** DpuServer is about to start, in that phase reading parameter infos.
- Red light** DpuServer is not operating or not accessible


Server parameters are stored on the DpuServer computer.

## 2.2.2 Managing Licenses


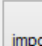
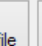
The purpose of managing licenses is:

- 1) show the actual licenses status
- 2) add new licenses by directly typing in license keys
- 3) import license key from a license import file (.dki-file)

DpuEnterpriseManager shows the license state of the currently selected DpuServer.


**Manage licences - DpuServer**

N	manuf...	modul	type	version range	expiring data	used by	division	claimed since	feedback
1	DPU	DpuSvr	DpuServer (34)	1.01-1.99	-	DPUSEVER(1)	-	-	-
2	DPU	DpuScn	Gold	5.01-6.29	-	-	-	-	-
3	DPU	JKFR60	Plugin	-	-	-	-	-	-
4	DPU	ColRec	Plugin	-	-	-	-	-	-
5	DPU	JkpGma	Plugin	-	-	-	-	-	-
6	DPU	InImEh	Plugin	-	-	-	-	-	-
7	DPU	EdgEnh	Plugin	-	-	-	-	-	-
8	DPU	JKSImg	Plugin	-	-	-	-	-	-
9	DPU	DpuFin	DpuFinalize	5.01-6.29	-	-	-	-	-
10	DPU	JKFR60	Plugin	-	-	-	-	-	-
11	DPU	ColRec	Plugin	-	-	-	-	-	-
12	DPU	JkpGma	Plugin	-	-	-	-	-	-
13	DPU	InImEh	Plugin	-	-	-	-	-	-
14	DPU	EdgEnh	Plugin	-	-	-	-	-	-
15	DPU	JKSImg	Plugin	-	-	-	-	-	-
16	DPU	DpuScn	Gold	5.01-6.29	-	-	-	-	-
17	DPU	JKFR60	Plugin	-	-	-	-	-	-
18	DPU	ColRec	Plugin	-	-	-	-	-	-
19	DPU	JkpGma	Plugin	-	-	-	-	-	-
20	DPU	InImEh	Plugin	-	-	-	-	-	-
21	DPU	EdgEnh	Plugin	-	-	-	-	-	-
22	DPU	JKSImg	Plugin	-	-	-	-	-	-

 enter key
  import key file
  update

**2.2.2.1 Columns**

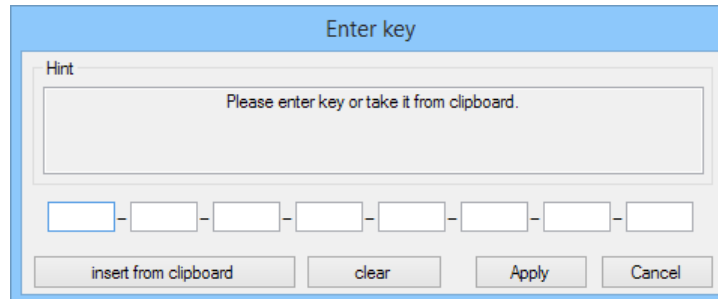
<b>No.</b>	ordering number
<b>manufacturer</b>	Manufacturer of DpuScan or Plugin
<b>module</b>	short name of DpuScan or Plugin
<b>type</b>	more specific information on license
<b>version range</b>	version of DpuScan or Plugin for which the license is valid
<b>expiring data</b>	for a time limited (demo) license: the date of expiration
<b>used by</b>	shows the computer name and the user name of the licensee
<b>claimed since</b>	time and date when license was last claimed
<b>feedback</b>	last time of the periodically given alive message from the licensee
<b>sequence</b>	if one license is gives allowance for several stations
<b>key</b>	key code as given by the certificate on purchase
<b>GUID</b>	an arbitrary unique ID for each granted license

### 2.2.2.2 Management Tasks

With License Management new additional licenses can be entered into the DpuServer data base.

#### Enter key

for directly entering a single license key, will open up the key dialog

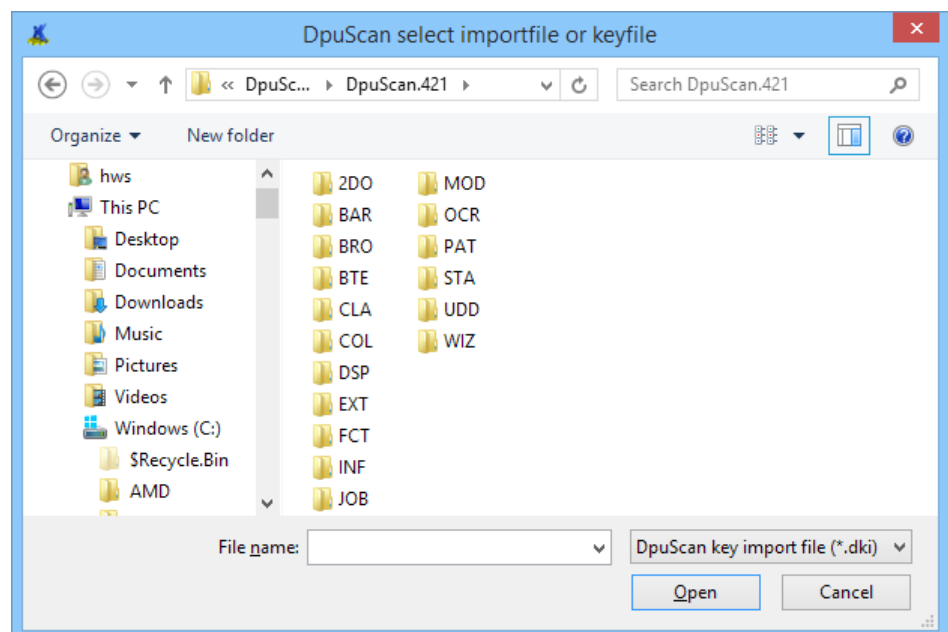


The key dialog also supports cut and paste entry.

**Apply** will either silently accept the new key or it will show an error box.

#### Import key file

will import one or more keys simultaneously from a vendor supplied key file. Hitting the button will open up the file selection dialog box.

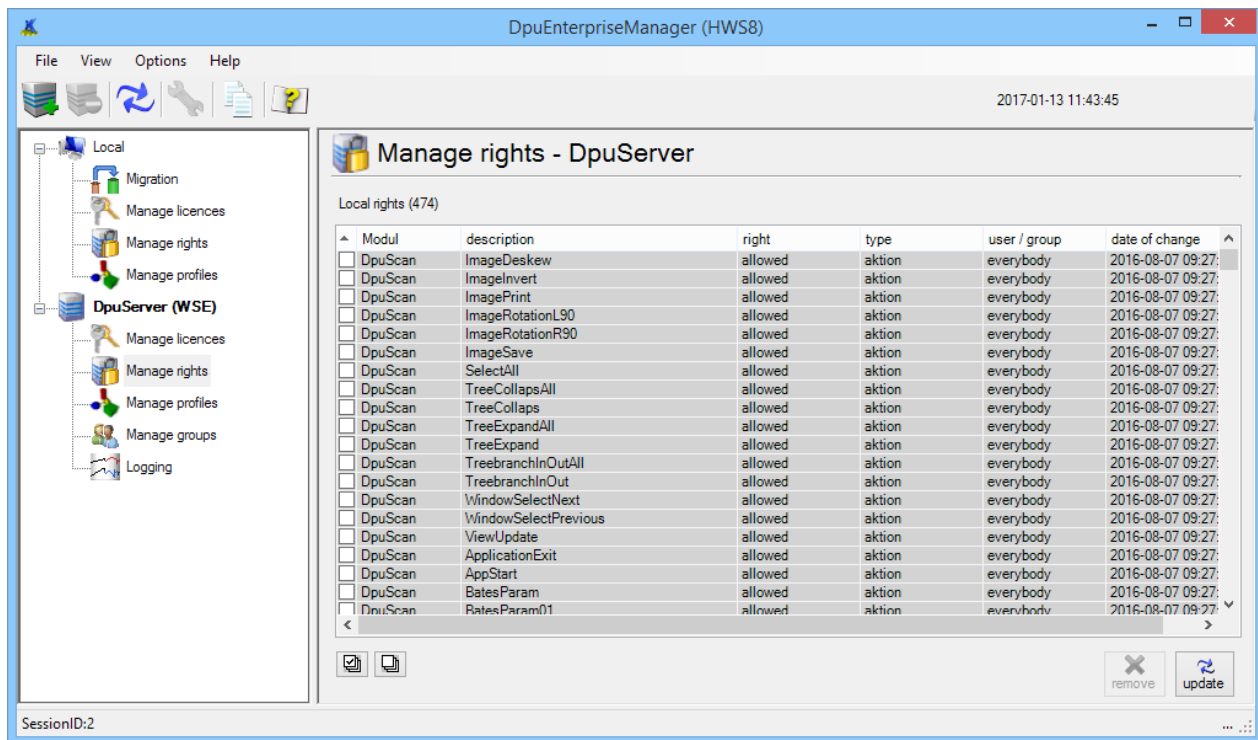


The key file will be given in addition to the printed certificate of the purchased licenses.



### 2.2.3 User Rights Management

The „Manage rights“ page lists user rights as stored on the Server; but rights can also be removed here.



#### 2.2.3.1 Columns

The same as in [2.1.3.1 Columns](#)

#### 2.2.3.2 Management Tasks

##### Remove

will remove rights from the selected server.

##### Update

will update the display with changes that might have been made by some other station.

### 2.2.4 Group Management

“Manage Groups” sets up distribution rules for stored Profile data and Licenses.

Stationgroup shows the list of existing groups. By selecting a group the fields

- assigned stations
- assigned profiles
- assigned licenses

will show all the assigned items for the group.

A stationgroup can be generated and given an arbitrary name. Once a group is created, client stations must be assigned to this group. By adding licenses and/or profiles to this group, all the stations of the group will receive those items at start up.

**Manage groups - DpuServer**

stationgroup (1/5)

name	type
<input type="radio"/> Scangruppe 2	JK
<input checked="" type="radio"/> SCANGROUP1	JK
<input type="radio"/> hws	JK
<input type="radio"/> Externe	JK
<input type="radio"/> Administratoren	JK

assigned stations (1)

name	division
<input type="checkbox"/> DPU_W01	-

New edit remove update

Assign division ... Divisions ... assign stations

assigned profiles (3)

name	Version
LIEFERSCHEINE	1.01
POSTEINGANG	1.01
RECHNUNGEN	1.01

assigned licences (1)

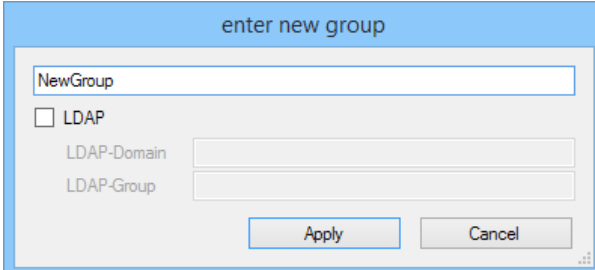
sequence	name
1	Gold

assign profiles assign licences

## 2.2.4.1 Management Tasks

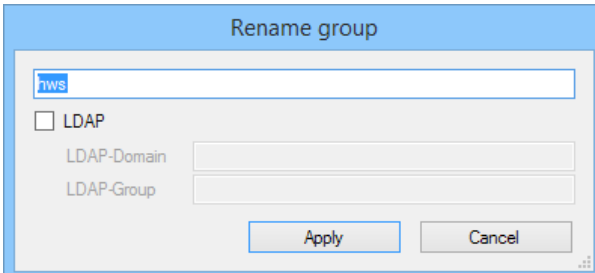
### New

Create a group and give it an arbitrary name.



### Edit

Change the group's name.

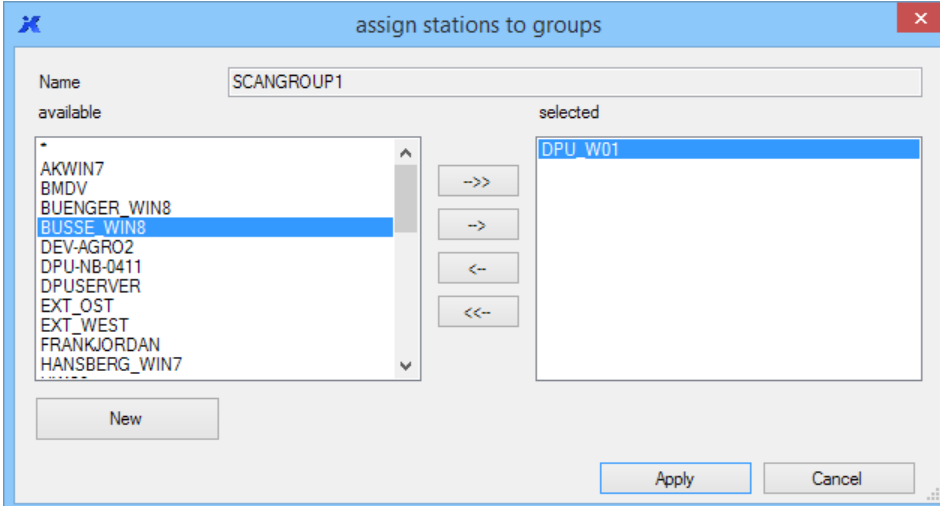


### Remove

Delete the selected group(s).

### Assign Stations

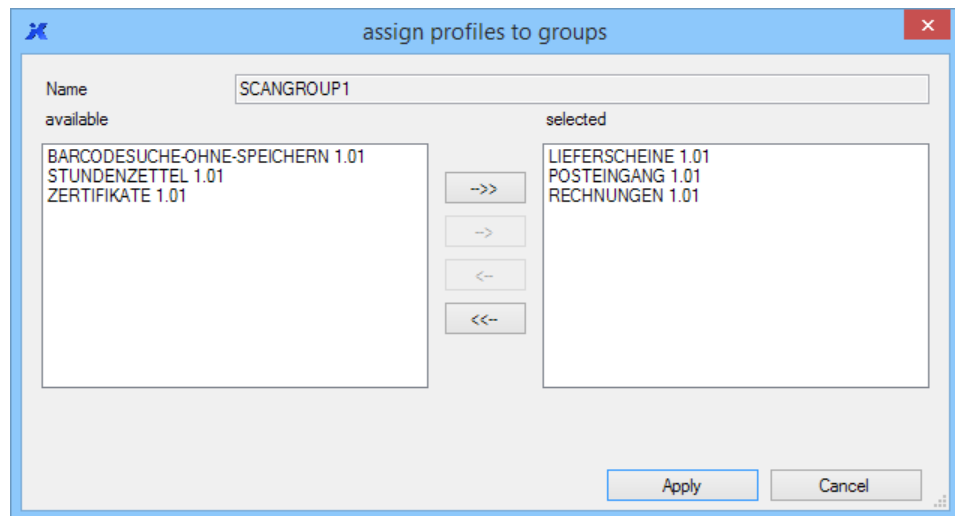
Assign one or more stations to the group



“\*” represents ‘all’ station

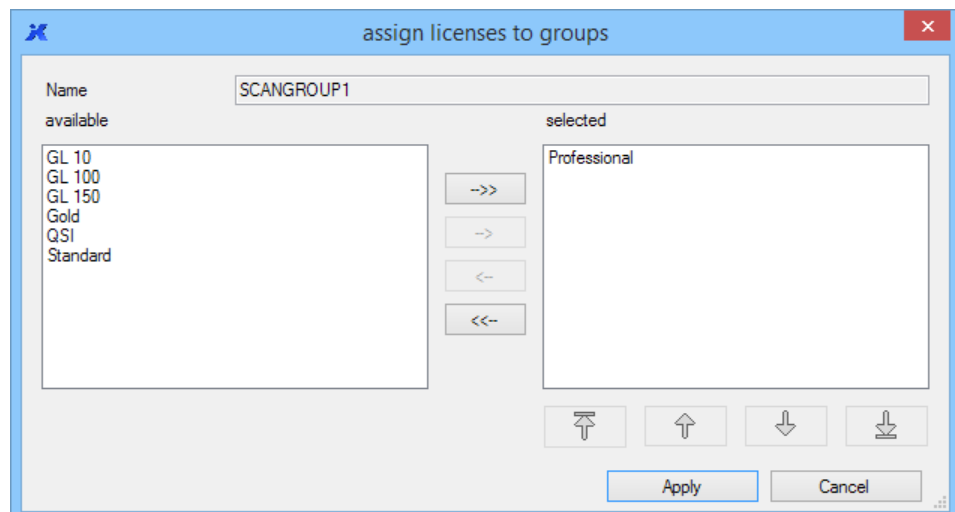
## Assign Profiles

Assign one or more profiles to the selected group



## Assign Licenses

Assign one or more licenses to the selected group



The precedence for license distribution can be set by moving a type of license to an upper position on the list of 'selected' licenses.

## 2.2.5 Profile Management

“Manage Profiles” shows all profiles and subprofiles (if ☒ Subprofile anzeigen is set) that have been setup on a client station and then have been move to the server by the ‘publish’ function.

Manage profiles - DpuServer

remote profiles (6) Groups: All ☐ show subprofiles

profile	type	Version	status	copy	user profile	last change on
<input type="checkbox"/> BARCODESUCHE-OHNE-S...	profile	1.01	enabled	always	do not remove	2016-07-08 09:20:50
<input type="checkbox"/> LIEFERSCHEINE	profile	1.01	enabled	always	do not remove	2016-07-07 08:08:14
<input type="checkbox"/> POSTEINGANG	profile	1.01	enabled	always	do not remove	2016-07-08 09:09:22
<input type="checkbox"/> RECHNUNGEN	profile	1.01	enabled	always	do not remove	2016-07-07 08:06:39
<input type="checkbox"/> STUNDENZETTEL	profile	1.01	enabled	always	do not remove	2016-07-07 08:08:14
<input type="checkbox"/> ZERTIFIKATE	profile	1.01	enabled	always	do not remove	2016-07-07 08:08:14

Buttons: import DAT, export DAT, Mirror, store changes, remove, update

### 2.2.5.1 Columns

The same as [2.1.3.1 Columns](#).

### 2.2.5.2 Management Tasks

#### Store changes

registers changes made to the handling attributes ‘Copy’ and ‘User profile’.

#### Remove

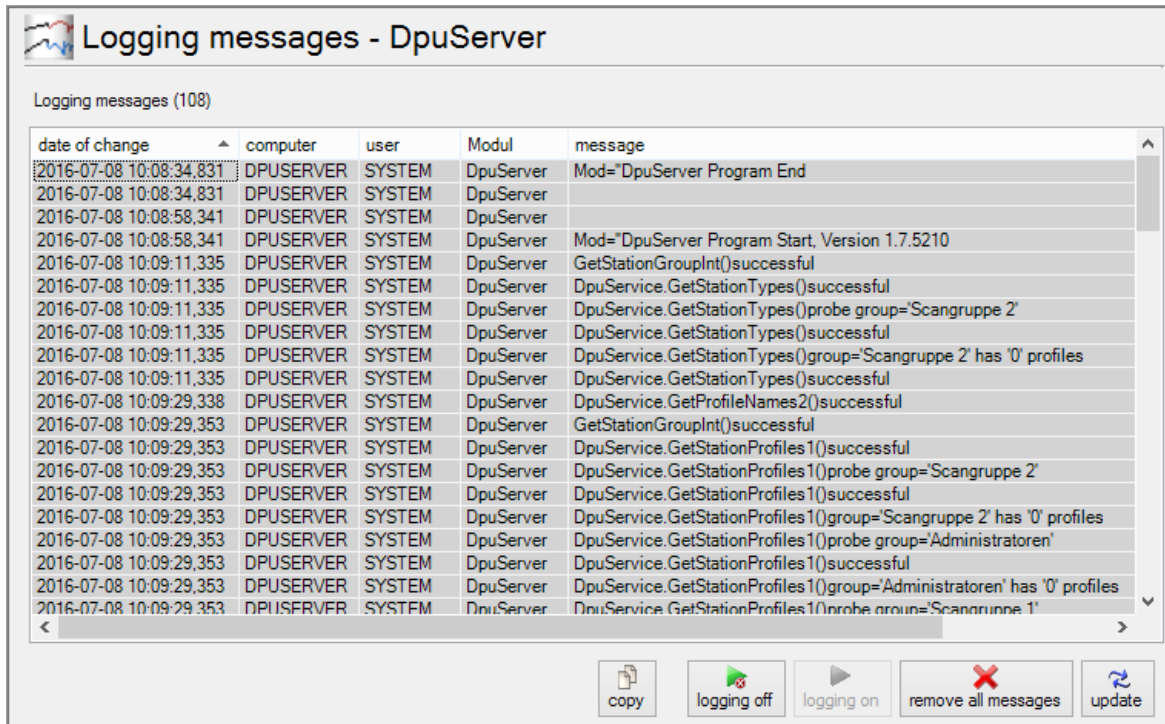
removes (deletes) the selected profile(s) or subprofile(s) from DpuServer’s data base. Those removed profiles assigned to a group will be removed from that group.

#### Update

updates the list of profiles on the server for showing changes made by some other statoin by a function of **Publish** or **Remove**.

## 2.2.6 Logging

Logging shows server events and messages generated throughout normal or abnormal server operation. Logging is a good place to look at for controlling client/server interaction.



Logging messages (108)

date of change	computer	user	Modul	message
2016-07-08 10:08:34,831	DPUSERVER	SYSTEM	DpuServer	Mod="DpuServer Program End
2016-07-08 10:08:34,831	DPUSERVER	SYSTEM	DpuServer	
2016-07-08 10:08:58,341	DPUSERVER	SYSTEM	DpuServer	
2016-07-08 10:08:58,341	DPUSERVER	SYSTEM	DpuServer	Mod="DpuServer Program Start, Version 1.7.5210
2016-07-08 10:09:11,335	DPUSERVER	SYSTEM	DpuServer	GetStationGroupInt()successful
2016-07-08 10:09:11,335	DPUSERVER	SYSTEM	DpuServer	DpuService.GetStationTypes()successful
2016-07-08 10:09:11,335	DPUSERVER	SYSTEM	DpuServer	DpuService.GetStationTypes()probe group='Scangruppe 2'
2016-07-08 10:09:11,335	DPUSERVER	SYSTEM	DpuServer	DpuService.GetStationTypes()successful
2016-07-08 10:09:11,335	DPUSERVER	SYSTEM	DpuServer	DpuService.GetStationTypes()group='Scangruppe 2' has '0' profiles
2016-07-08 10:09:11,335	DPUSERVER	SYSTEM	DpuServer	DpuService.GetStationTypes()successful
2016-07-08 10:09:29,338	DPUSERVER	SYSTEM	DpuServer	DpuService.GetProfileNames2()successful
2016-07-08 10:09:29,353	DPUSERVER	SYSTEM	DpuServer	GetStationGroupInt()successful
2016-07-08 10:09:29,353	DPUSERVER	SYSTEM	DpuServer	DpuService.GetStationProfiles1()successful
2016-07-08 10:09:29,353	DPUSERVER	SYSTEM	DpuServer	DpuService.GetStationProfiles1()probe group='Scangruppe 2'
2016-07-08 10:09:29,353	DPUSERVER	SYSTEM	DpuServer	DpuService.GetStationProfiles1()successful
2016-07-08 10:09:29,353	DPUSERVER	SYSTEM	DpuServer	DpuService.GetStationProfiles1()group='Scangruppe 2' has '0' profiles
2016-07-08 10:09:29,353	DPUSERVER	SYSTEM	DpuServer	DpuService.GetStationProfiles1()probe group='Administratoren'
2016-07-08 10:09:29,353	DPUSERVER	SYSTEM	DpuServer	DpuService.GetStationProfiles1()successful
2016-07-08 10:09:29,353	DPUSERVER	SYSTEM	DpuServer	DpuService.GetStationProfiles1()group='Administratoren' has '0' profiles
2016-07-08 10:09:29,353	DPUSERVER	SYSTEM	DpuServer	DpuService.GetStationProfiles1()probe group='Scangruppe 1'

copy logging off logging on remove all messages update

### 2.2.6.1 Columns

The columns list information about time, station, user and message contents.

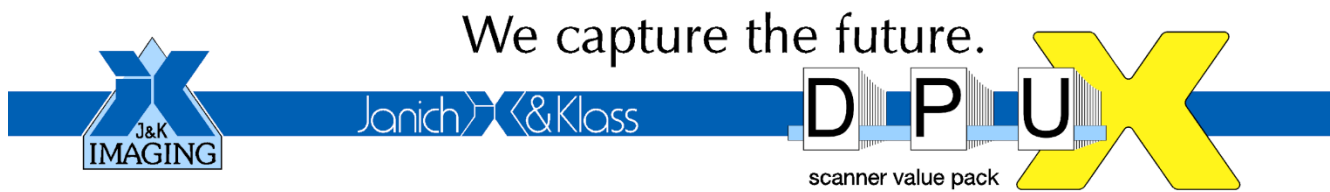
### 2.2.6.2 Management Tasks

- Copy** will copy the selected line to the clipboard
- Logging off** Temporarily disables logging. On restarting the server the mode of logging will be set according to the configuration of the server
- Logging on** Temporarily enables logging. On restarting the server the mode of logging will be set according to the configuration of the server
- Remove all messages** Deletes all messages.
- Update** Updates the display list with new messages already in buffer.

### 3 Command Line Parameters

For running DpuEnterpriseManager there are some parameters to set the working mode of the program:

Parameter	Function																				
PAGE:<parameter>	Selects the configuration page to show on startup:																				
	<table><tr><th>&lt;parameter&gt;</th><th>Page</th></tr><tr><td>LOCALS.HOME</td><td>Status page of local station</td></tr><tr><td>LOCALS.RIGHTS</td><td>Rights page of local station</td></tr><tr><td>LOCALS.PUBLICATION</td><td>Migration page of local station</td></tr><tr><td>&lt;server&gt;.HOME</td><td>Status page of DpuServer</td></tr><tr><td>&lt;server&gt;. LICENCE</td><td>Licenses management des DpuServer</td></tr><tr><td>&lt;server&gt;. GROUPS</td><td>Groups management of DpuServer</td></tr><tr><td>&lt;server&gt;. PROFILES</td><td>Profiles management of DpuServer</td></tr><tr><td>&lt;server&gt;. RIGHTS</td><td>Rights management of DpuServer</td></tr><tr><td>&lt;server&gt;. LOGGING</td><td>Logging of named DpuServer</td></tr></table>	<parameter>	Page	LOCALS.HOME	Status page of local station	LOCALS.RIGHTS	Rights page of local station	LOCALS.PUBLICATION	Migration page of local station	<server>.HOME	Status page of DpuServer	<server>. LICENCE	Licenses management des DpuServer	<server>. GROUPS	Groups management of DpuServer	<server>. PROFILES	Profiles management of DpuServer	<server>. RIGHTS	Rights management of DpuServer	<server>. LOGGING	Logging of named DpuServer
<parameter>	Page																				
LOCALS.HOME	Status page of local station																				
LOCALS.RIGHTS	Rights page of local station																				
LOCALS.PUBLICATION	Migration page of local station																				
<server>.HOME	Status page of DpuServer																				
<server>. LICENCE	Licenses management des DpuServer																				
<server>. GROUPS	Groups management of DpuServer																				
<server>. PROFILES	Profiles management of DpuServer																				
<server>. RIGHTS	Rights management of DpuServer																				
<server>. LOGGING	Logging of named DpuServer																				
	<server> is a placeholder for the actual computer name of DpuServer to show. Instead of the computer name, the keyword FIRST can be used to select the first DpuServer from the list of registered servers.																				
NEWSERVER:<server>	<server> can be given as :<servername> <port> <[tcp,http]>																				



Janich & Klass Computertechnik GmbH  
Zum Alten Zollhaus 24  
42281 Wuppertal  
Deutschland  
Tel.: +49 (0)202 2708-0  
Fax: +49 (0)202 700 625  
<http://www.janichklass.com>

408.200801.001 5