



DpuScan

Janich & Klass
Computertechnik GmbH



DpuScan 6.x

PlugIn PlgEraser

Reference Manual

Copyrights

© 1997 to 2022 DPU © Janich & Klass Computertechnik GmbH. All rights reserved.
Printed in Germany. The information contained in this documentation is the property of DPU © Janich & Klass Computertechnik GmbH, Wuppertal. Neither receipt nor possession hereof confers or transfers any right to reproduce or disclose any part of the contents hereof, without the prior written consent of Janich & Klass, Wuppertal

Trademarks

The DPU logo is a registered trademark of DPU © Janich & Klass Computertechnik GmbH. All other product names and logos are trademarks or registered trademarks of their representative companies.

Disclaimer

The instructions and descriptions in this manual were accurate at the time of this manual's printing. However, we reserve the right to alter the description and/or the product at anytime without prior notice. As per the actual state of software technique it is not possible to develop programs that will work trouble-free under all conditions and in any configuration. DPU © Janich & Klass Computertechnik GmbH assume no liability for damages incurred directly or indirectly from errors, omissions, or discrepancies between this manual and the product.

Actuality

It may happen that a more recent version of this manual for DpuScan is available for download from the Internet. Therefore, it is recommended that you should compare the version by means of the date printed on this page with the version on the Internet. You should please use the most up-to-date version of the manual. The actual version of this First Steps Manual is found on the Web at the following address:

https://www.dpuscan.com/pdf/en_manual/DpuScan-Reference-Manual.pdf

Table of Contents

1 Overview	4
1.1 Configuration in the base profile	5
1.2 Configuration of the Plugin	8
1.3 Configuration in the task profile	11
1.4 Configuration as a command	12
1.5 Displayed windows and return values	13
1.6 Summary	14

1 Overview

With the PlugIn PlgEraser you can erase parts of a document to make them unrecognizable. This is useful if, for example, personal data should not be stored.

Requirements for using the PlugIn

The PlugIn can be used in all licensed versions of DpuScan from version 5.01. No additional license is required for this PlugIn.

How the PlugIn works

The PlugIn can be called in the task profile, i.e. the list of instructions, after scanning the image.

An interactive overwriting of a selected image area when checking after scanning has not yet been implemented in this version.

When the PlugIn is called, the defined areas are then painted over with a given color. The colors used can be selected from the appropriate spectrum, i.e. black or white for bitonal images, a shade of gray for grayscale images and a color for color images.

Various configuration steps are required to use the PlugIn:

[Configuration in the base profile](#)

[Configuration of the PlugIn](#)

[Configuration in the task profile](#)

[Configuration as a command](#)

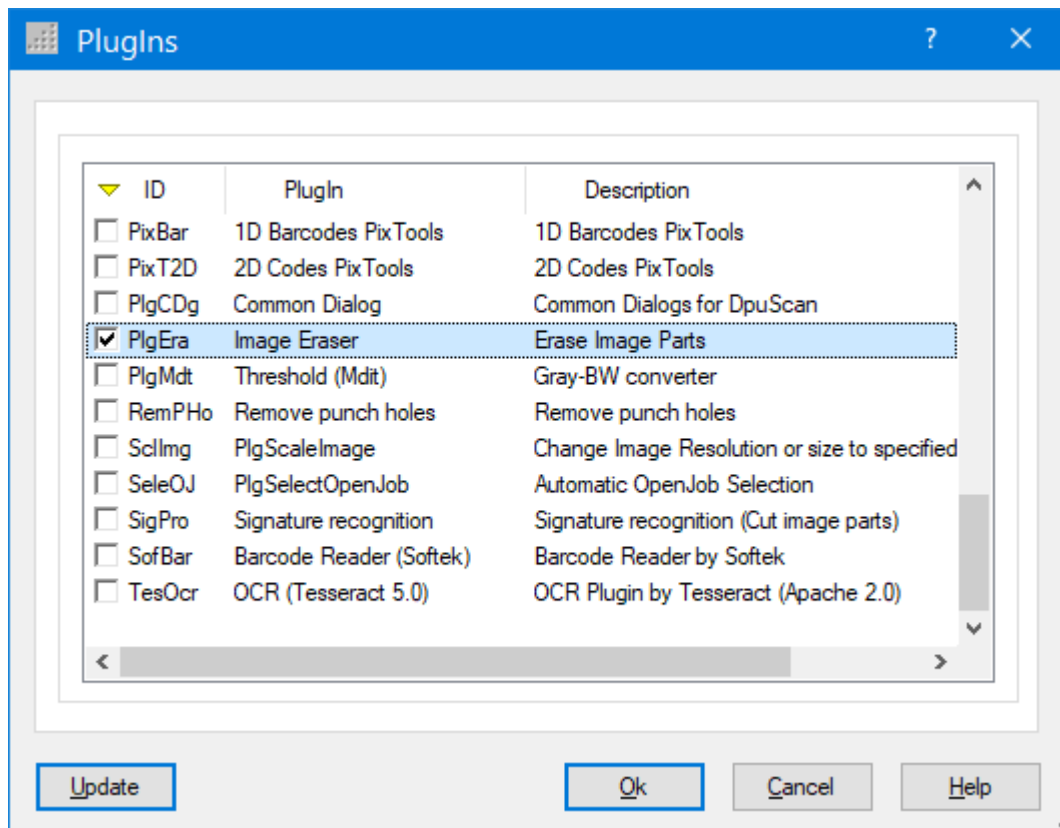
[Displayed windows and return values](#)

[summary](#)

1.1 Configuration in the base profile

The PlugIn has to be loaded and configured within the base profile. To do this, open the base profile configuration, select the Process tab and click the PlugIns button.

The Add button takes you to the selection of the available PlugIns.

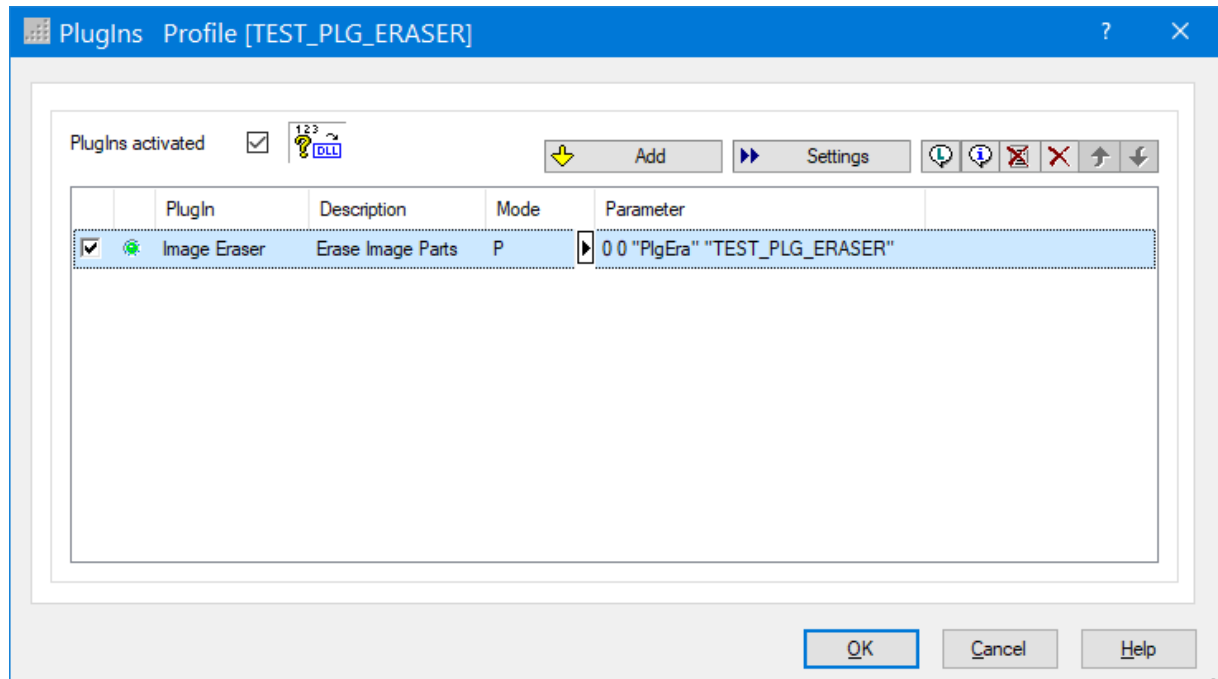


Available PlugIns

Select the PlugIn PlgEraser (Image Eraser) with the ID "PlgEra". The PlugIn is now loaded for use within the base profile.

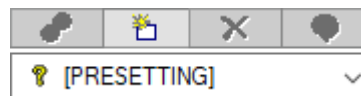
Please make sure that the check box "PlugIns activated" is checked, otherwise the PlugIns will not be used. The check box can only be activated if at least one PlugIn has been loaded.

The green point in the list of PlugIns loaded indicates that the PlugIn is ready for use. The entry in the **Mode** column shows the string P. This means that this PlugIn works in process mode.



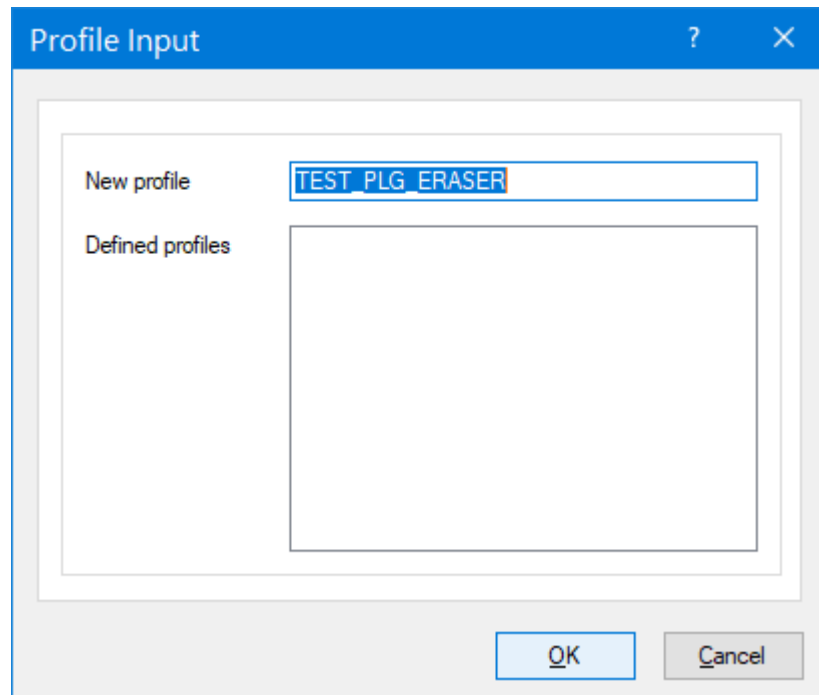
PlugIn in the list of loaded PlugIns

Now create a configuration by double-clicking in the cell for the "Parameter" column. The dialog for calling the PlugIn as a broker event or when changing selection opens. There are a number of buttons there:



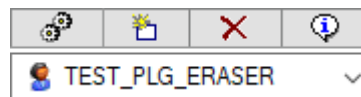
Creation of a new sub-profile

The only button available is the New button; use it to create a new sub-profile. You will be asked to enter a name for the configuration to be created.



Enter a new sub-profile

After creating the new sub-profile, the other buttons are now available:

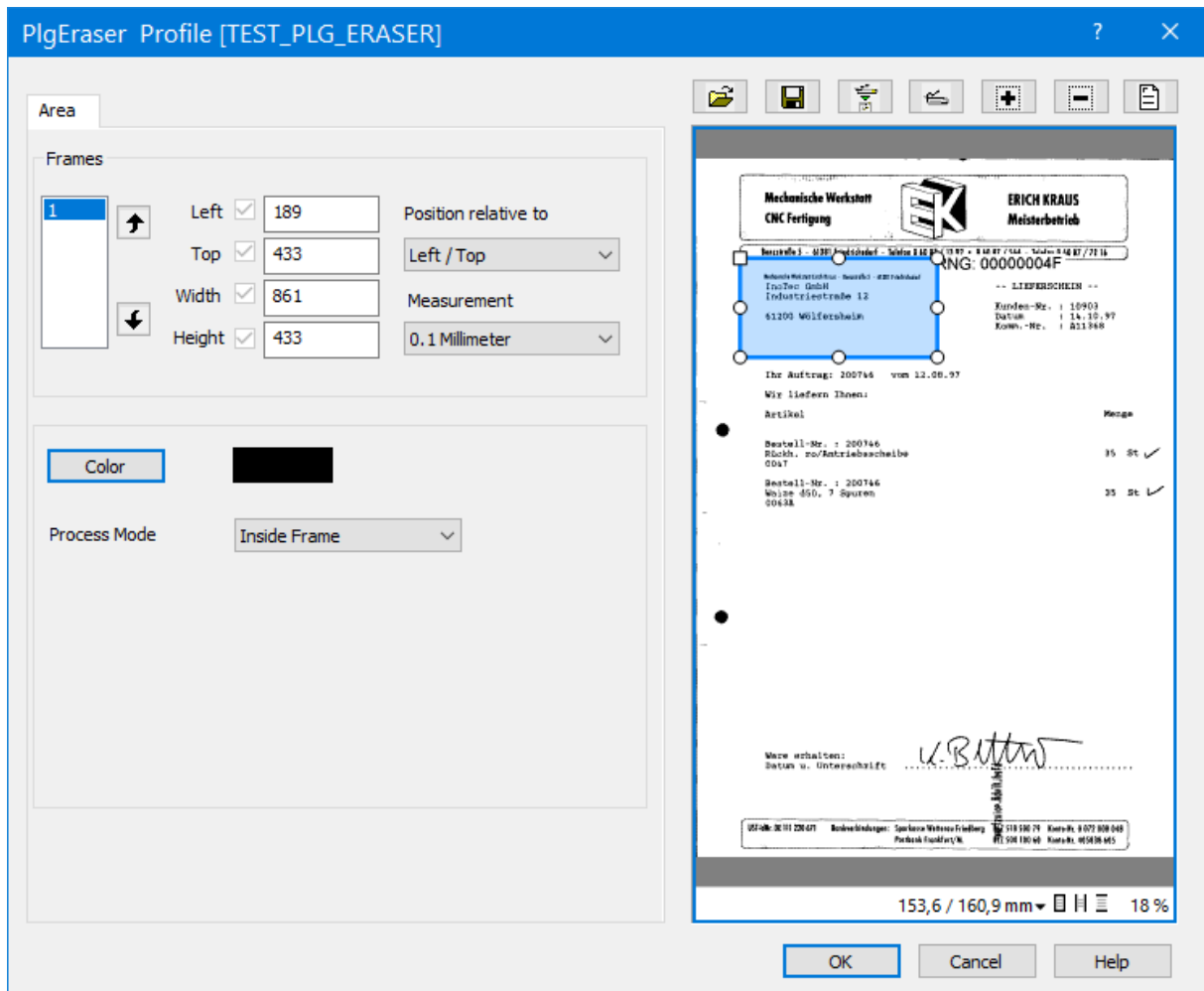


Manage sub-profiles

Click the Change button with the cogs. A [separate dialog](#) is available for the actual configuration of the PlugIn. After you have made the settings there, you can exit all open dialogs with OK.

1.2 Configuration of the Plugin

The configuration dialog for the Plugin PlgEraser offers the settings on the left side and a preview on the right side.



Configuration of the Plugin

Preview Window

The loaded or scanned image is displayed in this window in order to test the set parameters. After the test, the changed image is displayed..

The image section can be moved by holding and dragging the **left mouse button**. The view can be enlarged or reduced with the **mouse wheel**. The **right mouse button** has no function here.





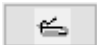
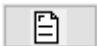
At the bottom of the window is a small toolbar with a few controls to show the position of the mouse pointer, change the units of measurement, fit the image into the view, and show the view scaling factor

43,4 / 176,7 mm ▾ 100 %

Toolbar of the Preview Window

The position can be displayed in mm, inches or pixels. The small buttons resize the image to display full size, width or height.

Above the preview window there are some buttons:

	File open	Loads a file from the hard drive and displays the image in the window. All common image formats can be loaded, such as Jpeg, Tiff, Bmp images.
	Add frame	Creates a frame on the image. Position and size of the frame can be changed later.
	remove frame	Removes the frame selected currently.
	Scan	Gets an image from the scanner
	Scanner settings	Opens the setup dialog for the scanner
	Test	Performs the overwrite image parts on the selected image in the defined areas.

The settings for the overwrite image parts can be made on the left side:

Frames

Settings for the image areas in which the overwrite image parts should be applied.

Left

Specifies the position of the left edge of the frame based on the frame's alignment (position relative to).

Top

Specifies the position of the upper edge of the frame based on the frame's alignment (position relative to).

Width

Specifies the width of the frame.

Height

Specifies the height of the frame.

Position relative to

The position of the upper left corner of each field can be chosen relative to one of the four corners of the sheet.

This means that image areas on sheets of different sizes can also be painted over if, for example, they are always at the bottom right.

Measurement

Here the unit of measurement can be switched between pixels, thousandths of an inch and tenths of a millimeter. This makes sense if no digital sample image is available and the values measured on paper are to be used.

Lower Frame

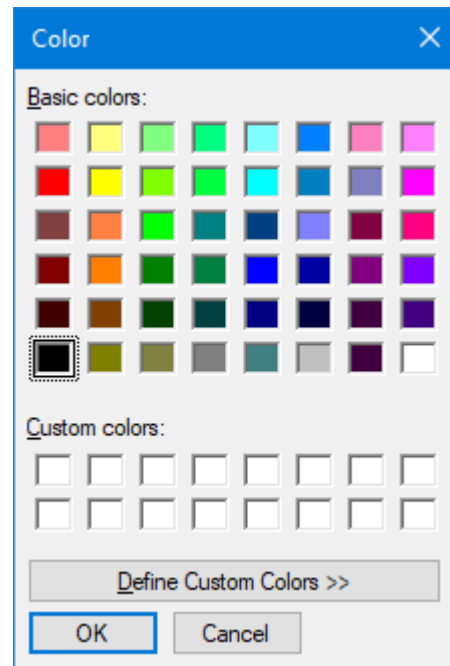
Setting for color and filling mode.

Color

Allows to define the color of the active rectangle. Predefined colors can be selected as well as user defined colors.

Please note that bitonal images can only display black or white colors. If you have defined a different one, the color will be converted to black or white. The same applies to gray images. There only gray values are defined as colors, all others are converted into gray values. Any RGB color can be defined on color images.

To pick up the color the corresponding system's dialog is used:



System's color dialog

Process Modes

Indicates whether to paint over the specified areas or to paint over the whole image and leave only the defined areas untouched.

At the bottom there are the usual buttons:

OK

Closes the dialog box and saves all search parameters.

Cancel

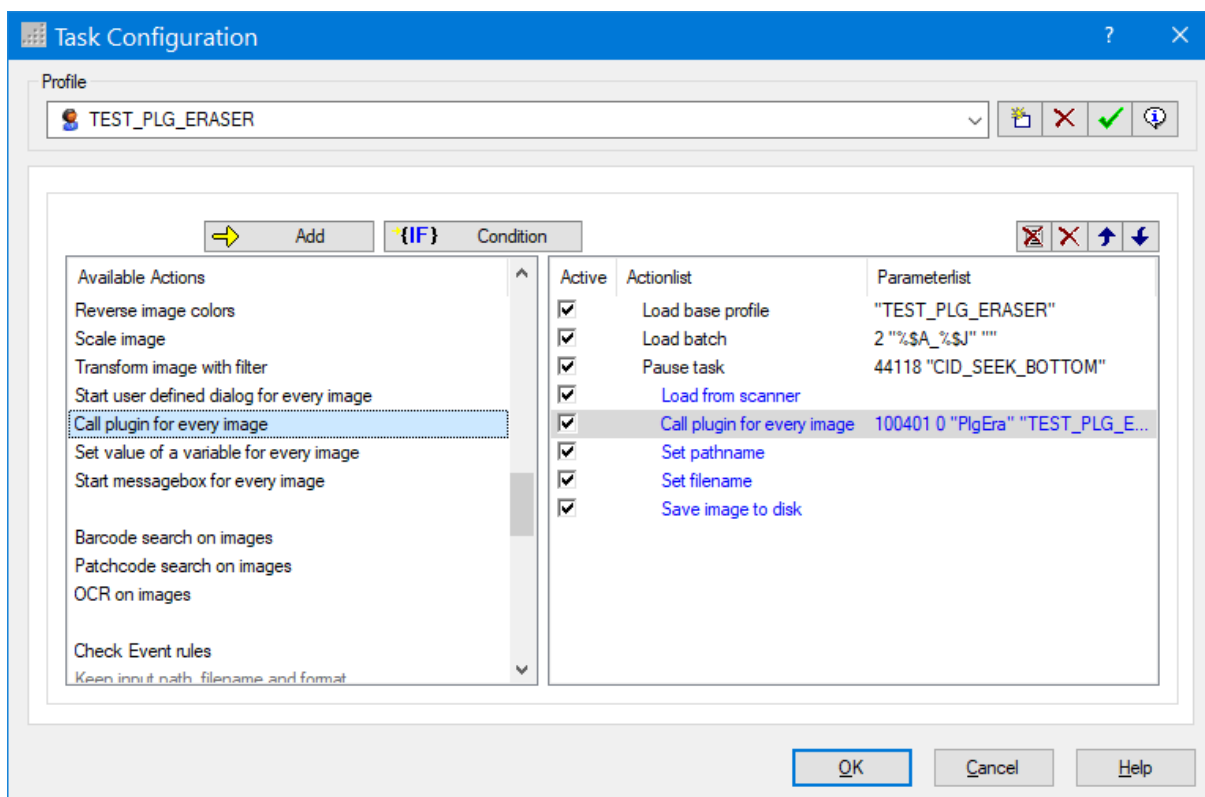
Drops all changes and leaves the dialog box.

Help

Opens the help file for PlugIn PlgEraser.

1.3 Configuration in the task profile

In the task profile, i.e. in the list of work instructions, the PlugIn can be inserted within the scan loop with the step "Call PlugIn for each image".



Calling the PlugIn in the task profile

In the subsequent dialog, specify which sub-profile is to be used and which color types should be handed over.

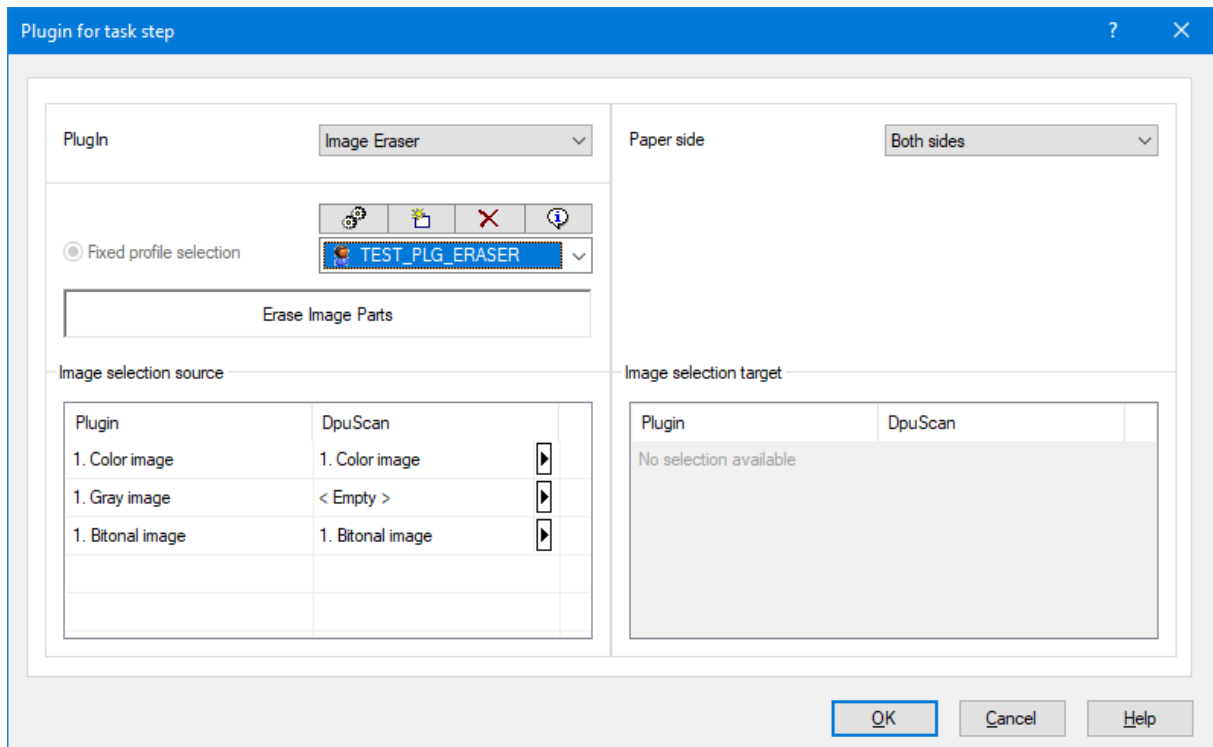


Image assignment for Plugin call in the task

The images are assigned in the dialog at the bottom left. The Plugin can only process one black and white image at a time. Enter in the DpuScan column which image is to be transferred.

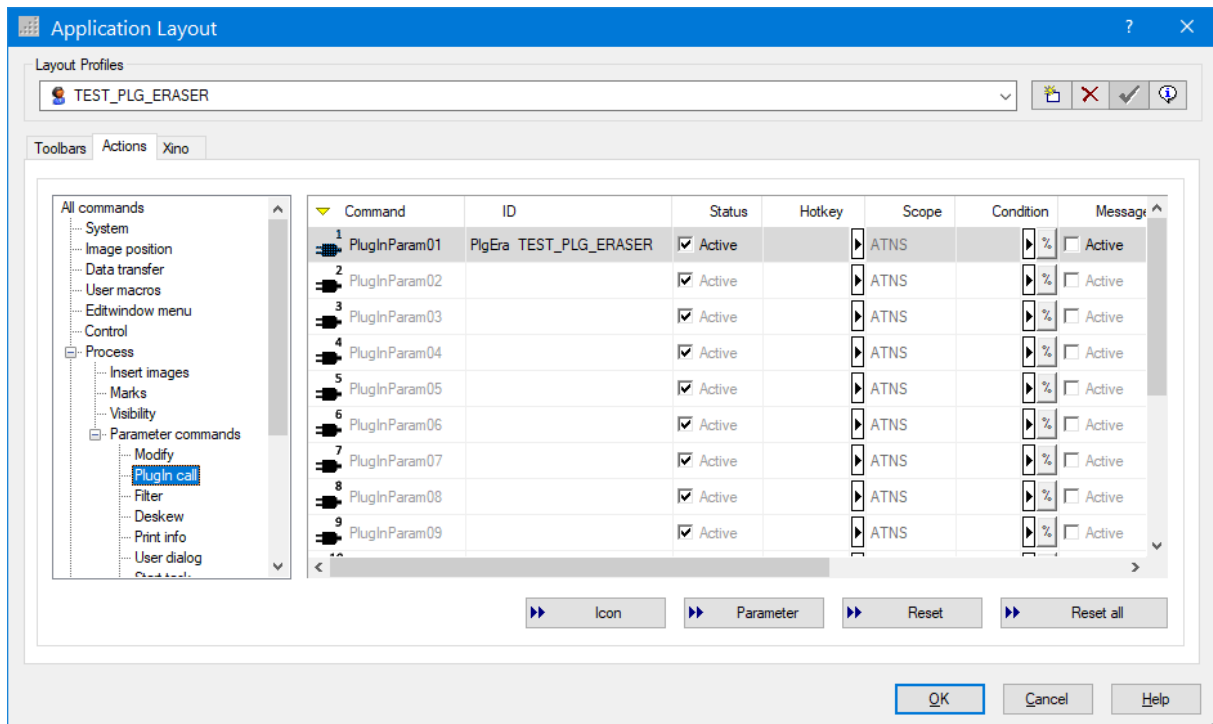
The number of the image does not indicate the position in the batch, but the position within a group of images. In most cases, the **1st** image must be used.

At the top right of the dialog, processing can be restricted to the front if the backs are not to be processed.

1.4 Configuration as a command

The Plugin can also be used during the scan pause. To do this, open the application layout configuration and go to "Toolbars".

In the tree view on the left scroll through **"Actions"** and select the branch **"Parameter commands"** the leaf **"Plugin call"**



Plugin call as a parameter command

A click on parameters or a double click on the Command column opens the [familiar dialog](#) for selecting the PlugIn, the sub-profile and the images to hand over. After entering these values, you can still assign an icon image, a keyboard shortcut and various labels.

If at least one other toolbar is available in addition to the menu bar, you can use the mouse to drag and place the new button on it. If you type in the keyboard shortcut or press this button, the PlugIn will be called.

If the the overwrite image parts is to be carried out in a macro, i.e. as part of a sequence of instructions, select **User macros** in the tree and insert the PlugIn call as a command.

1.5 Displayed windows and return values

The PlugIn does not display its own windows or messages during operation. Also it does not transfer any program variables.

1.6 Summary

Name of the Plugin	PlgEraser
Description	overwrite image parts
State	2/2/2022
DpuScan	Version 5.01 and higher
Plugin Files	PlgEraser.dll, PlgEraser_09.Ing
Additional Engine	none
Chargeable	No
Can be used as task step	Yes
Can be used as macro command	Yes
Can show a window	No
Reacts on broker events	No
Reacts on selection changes	No

Index

- A -

Alignment of a frame 8

- B -

Back sides 11

- C -

Call as a parameter command 12

Color to use 8

Configuration as a command 12

Configuration in the base profile 5

Configuration in the task profile 11

Configuration of the PlugIn 8

Creation of a new sub-profile 5

- D -

Display 13

- E -

Editing a sub-profile 5

- K -

Keep Areas 8

- M -

Measurement 8

- O -

Overwrite areas 8

Overwrite image 8

- P -

Position of a frame 8

Processe mode 8

- R -

Return values 13

- S -

Select color 8

Select images 11

Selection of the PlugIn 5

Size of a frame 8

Step in macro 12

Summary 14

- T -

Task step 11

- W -

Windows 13