



# DpuScan

Janich & Klass  
Computertechnik GmbH



## DpuScan 6.x

PlugIn Control Images

Reference Manual

## Copyrights

© 1997 to 2021 © 2021 Janich & Klass Computertechnik GmbH, Wuppertal, Germany. All rights reserved.

Printed in Germany. The information contained in this documentation is the property of © 2021 Janich & Klass Computertechnik GmbH, Wuppertal, Germany, Wuppertal. Neither receipt nor possession hereof confers or transfers any right to reproduce or disclose any part of the contents hereof, without the prior written consent of Janich & Klass, Wuppertal

## Trademarks

The DPU logo is a registered trademark of © 2021 Janich & Klass Computertechnik GmbH, Wuppertal, Germany. All other product names and logos are trademarks or registered trademarks of their representative companies.

## Disclaimer

The instructions and descriptions in this manual were accurate at the time of this manual's printing. However, we reserve the right to alter the description and/or the product at anytime without prior notice. As per the actual state of software technique it is not possible to develop programs that will work trouble-free under all conditions and in any configuration. © 2021 Janich & Klass Computertechnik GmbH, Wuppertal, Germany assume no liability for damages incurred directly or indirectly from errors, omissions, or discrepancies between this manual and the product.

## Actuality

It may happen that a more recent version of this manual for DpuScan is available for download from the Internet. Therefore, it is recommended that you should compare the version by means of the date printed on this page with the version on the Internet. You should please use the most up-to-date version of the manual. The actual version of this First Steps Manual is found on the Web at the following address:

[https://www.dpuscan.com/pdf/en\\_manual/DpuScan-Reference-Manual.pdf](https://www.dpuscan.com/pdf/en_manual/DpuScan-Reference-Manual.pdf)

## Table of Contents

<b>1 Overview</b>	<b>4</b>
1.1 Configuration in the Base Profile .....	5
1.2 Configuration of the Plugin .....	7
1.3 Configuration in Task Profile .....	8
1.4 Return Values .....	8
1.5 Summary .....	8

# 1 Overview

## Plugin for counting the controlled images

In many applications, the scanned images should also be checked as part of the scanning process. For example, certain policies contain values indicating what percentage of the images should be checked.

This Plugin supports the user in keeping an overview of the images that have already been checked.

It counts and documents the controlled images. The check itself is still a visual check.

If further actions are to be carried out for a control, these must be configured as part of the DpuScan configuration. For example, a minimum percentage value for the checked images can be defined, which must be reached before the batch can be finalized.

### Requirements for using the Plugin

The Plugin can only be used with DpuScan from version 6.12. For technical reasons, it is not possible to use a version lower than 6.12.

### How the Plugin works

If an image is selected,

- this image is marked as controlled with a color mark,
- the progress bar is updated,
- the display of the percentage of checked images is updated,
- an image variable is set to indicate the image as checked,
- the finalization threshold is checked to be reached

To use this Plugin, it must be loaded in the base profile and configured there.

Also a window area for the Plugin in the screen display has to be selected.

No work step is necessary in the task.

## [Configuration in the Base Profile](#)

### [Configuration of the PlugIn](#)

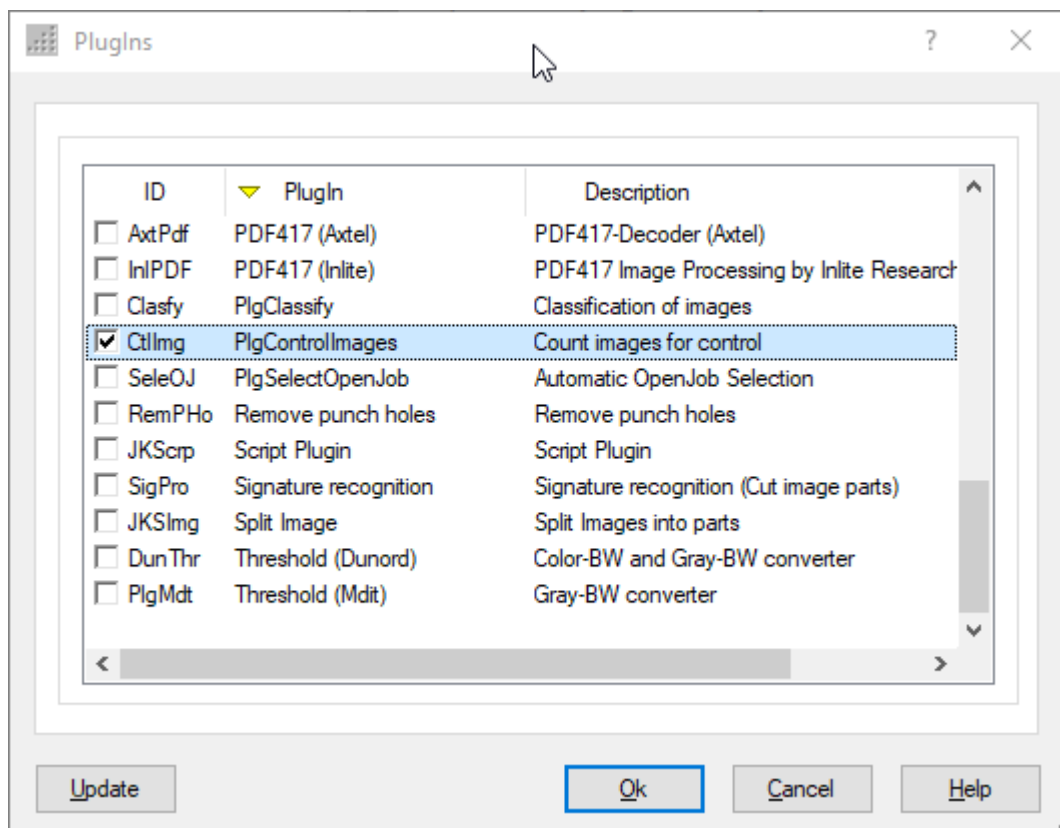
### [Configuration of the Task Profile](#)

### [Return Values](#)

### [Summary](#)

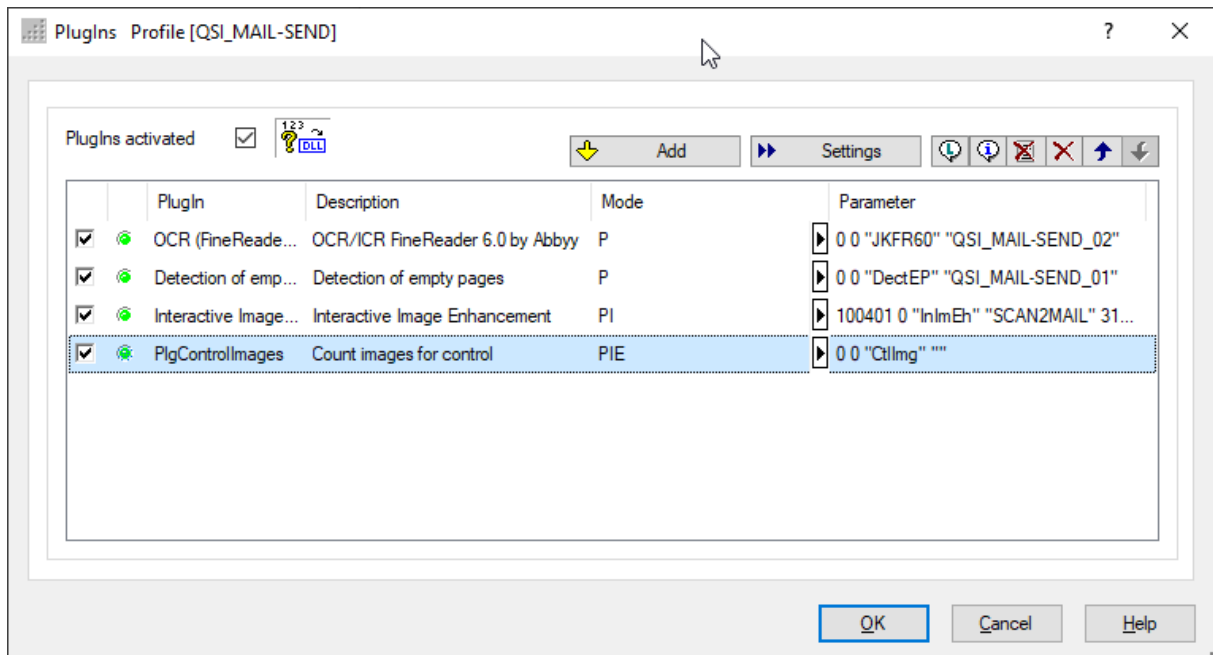
## 1.1 Configuration in the Base Profile

The PlugIn must be loaded and configured within the basic profile. To do this, open the **base profile configuration**, select the **Process** tab and click the **PlugIns** button. The Add button takes you to the selection of the available PlugIns.



List of available Plugins

Select the PlgControllImages PlugIn. The PlugIn is now loaded for use within the base profile.

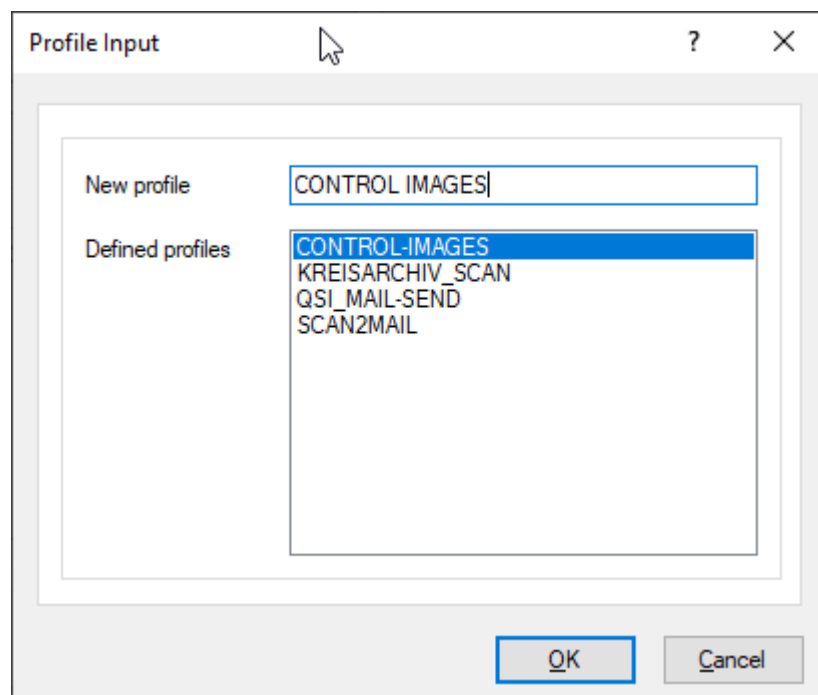


List of Plugins loaded

**Please make sure that the check box "Plugins activated" is checked, otherwise the Plugins will not be used. The check box can only be activated if at least one Plugin has been loaded.**

The entry in the list of loaded Plugins shows the character string PIE in the Mode column or three activated check boxes when selected. This means that this Plugin works in process, interactive and event mode.

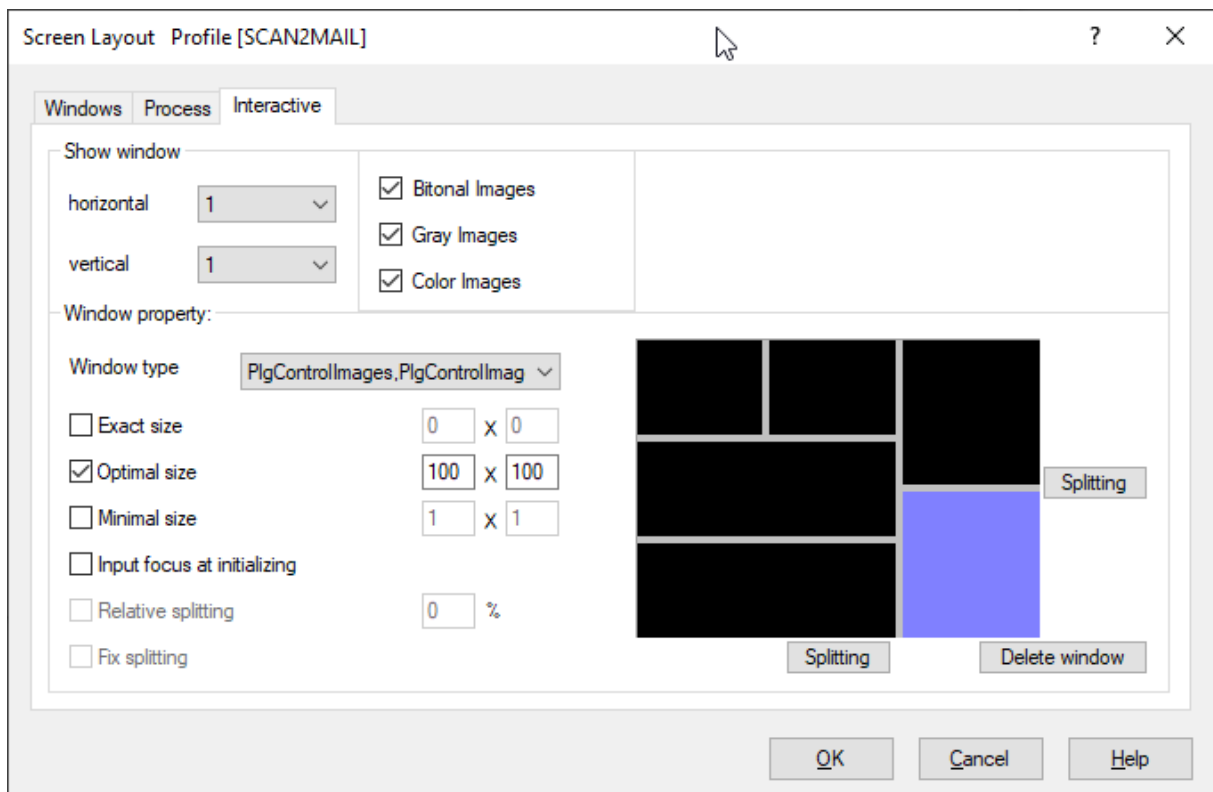
Now create a configuration by double-clicking in the cell for the "Parameter" column. Click on the symbol for a new profile. You will be asked for the name of the new profile:



Enter a new profile

The [configuration of the PlugIn](#) has its own dialog box.

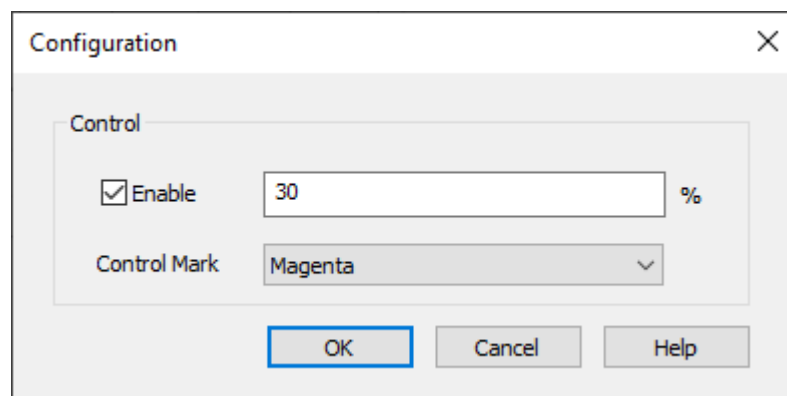
Then the configuration of the window area to display the control progress takes place: A window can be displayed in interactive mode to display the percentage achieved. This happens in the **screen layout** of the profile:



Display the panel for the Image Control

## 1.2 Configuration of the PlugIn

The configuration of the PlugIn consists of specifying a threshold value for finalization and the marker color for the images that have already been checked:



Configuration of the PlugIn

<b>Enable</b>	Enables the check at the end.  If this option is disabled, the proofed images will be marked but not counted. So is possible to finalize the batch at any time.
<b>percentage</b>	If enabled a percentage value can be given here. Then a finalization of the batch is allowed only if this threshold is reached.  The percentage value entered here is saved in this variable:  <code>%(V.DEFINED_CONTROL_PERCENT)</code>
<b>Control Mark</b>	In this drop-down box the color can be chosen to mark the checked images.
<b>OK</b>	Saves all changes and closes the dialog box.
<b>Cancel</b>	Drops all changes and quits the dialog.
<b>Help</b>	Opens the help file.

### 1.3 Configuration in Task Profile

It is not necessary to call it up in the task profile, the PlugIn works automatically as soon as scanning is started.

However, the variable `%(V.DEFINED_CONTROL_PERCENT)` can be set here before the start of the scan.

### 1.4 Return Values

The PlugIn returns these variables at any time:

<code>%(I.IMAGE_CHECKED)</code>	States that an Image was controlled
<code>%(J.NUMIMAGE_CHECKED)</code>	Total number of images checked up to now
<code>%(J.PCTIMG_CONTROLLED)</code>	Percentage value of the controlled images
<code>%(S.JOBIMAGECOUNT)</code>	Amount of all images in the batch, except the red marked.

### 1.5 Summary

Name of the PlugIns	PlgControllImages
Description	Counts and marks images the user have seen and controlled
State	11/16/2021



PlugIn Files	PlgControllImages.dll, PlgControllImages_09.lng
Additional Engine	None
DpuScan Version	6.12 and higher
Chargeable	Yes, only once
Can be used in the task	No
Can be used in a macro	No
Can show an own window	Yes
Reacts on broker events	Yes
Reacts on change of image selection	Yes

#### Input Variables

%  
(**V.DEFINED\_CONTROL\_PERCENT**  
**NT**)

Minimum percentage of images to be controlled before the allownes to finalize the batch.

#### Output Variables

% ( <b>I.IMAGE_CHECKED</b> )	States that an Image was controlled
% ( <b>J.NUMIMAGE_CHECKED</b> )	Total number of images checked up to now
% ( <b>J.PCTIMG_CONTROLLED</b> )	Percentage value of the controlled images
% ( <b>S.JOBIMAGECOUNT</b> )	Amount of all images in the batch, except the red marked.