



DpuScan

Janich & Klass
Computertechnik GmbH



DpuScan 6.x

PlugIn PlgBitToCol

Reference Manual

Copyrights

© 1997 to 2021 DPU © Janich & Klass Computertechnik GmbH. All rights reserved.
Printed in Germany. The information contained in this documentation is the property of DPU © Janich & Klass Computertechnik GmbH, Wuppertal. Neither receipt nor possession hereof confers or transfers any right to reproduce or disclose any part of the contents hereof, without the prior written consent of Janich & Klass, Wuppertal

Trademarks

The DPU logo is a registered trademark of DPU © Janich & Klass Computertechnik GmbH. All other product names and logos are trademarks or registered trademarks of their representative companies.

Disclaimer

The instructions and descriptions in this manual were accurate at the time of this manual's printing. However, we reserve the right to alter the description and/or the product at anytime without prior notice. As per the actual state of software technique it is not possible to develop programs that will work trouble-free under all conditions and in any configuration. DPU © Janich & Klass Computertechnik GmbH assume no liability for damages incurred directly or indirectly from errors, omissions, or discrepancies between this manual and the product.

Actuality

It may happen that a more recent version of this manual for DpuScan is available for download from the Internet. Therefore, it is recommended that you should compare the version by means of the date printed on this page with the version on the Internet. You should please use the most up-to-date version of the manual. The actual version of this First Steps Manual is found on the Web at the following address:

https://www.dpuscan.com/pdf/en_manual/DpuScan-Reference-Manual.pdf

Table of Contents

1 Overview	4
1.1 Configuration in Base Profile	5
1.2 Configuration in Task Profile	7
1.3 Configuration as Command	10
1.4 Summary	12

1 Overview

With the PlugIn PlgBitToCol you can convert black and white pictures into color pictures. This is useful, for example, if you have an existing process that expects color images as input (color scanner) and on the other hand only receive black and white images (FAX server) from another source.

The conversion only changes the format. No other colors or gray scales are reconstructed. The file format can be specified elsewhere in the Base- or Taskprofile.

Requirements for using the PlugIn

The PlugIn can be used in all licensed versions of DpuScan from version 5.01. No additional license is required for this PlugIn.

How the PlugIn works

The PlugIn is called when scanning or importing documents. It is called after the image data has been captured and carries out the conversion.

In the interactive mode, i.e. the pause after scanning in which the images are displayed, the PlugIn can be used specifically on a single image.

Various configuration steps are required to use the PlugIn:

[Configuration in Base Profile](#)

[Configuration in Task Profile](#)

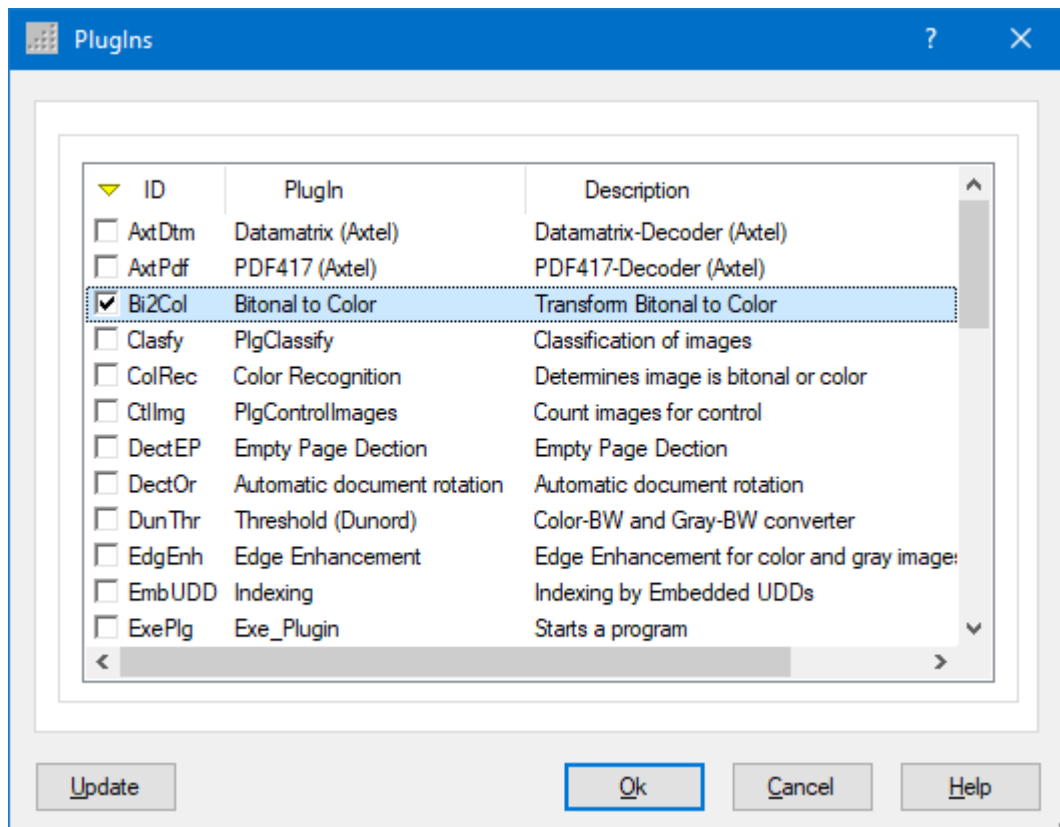
[Configuration as Command](#)

[Summary](#)

1.1 Configuration in Base Profile

The PlugIn has to be loaded and configured within the basic profile. To do this, open the **Base Profile** configuration, select the **Process** tab and click the **PlugIns** button.

The Add button takes you to the selection of the available PlugIns.

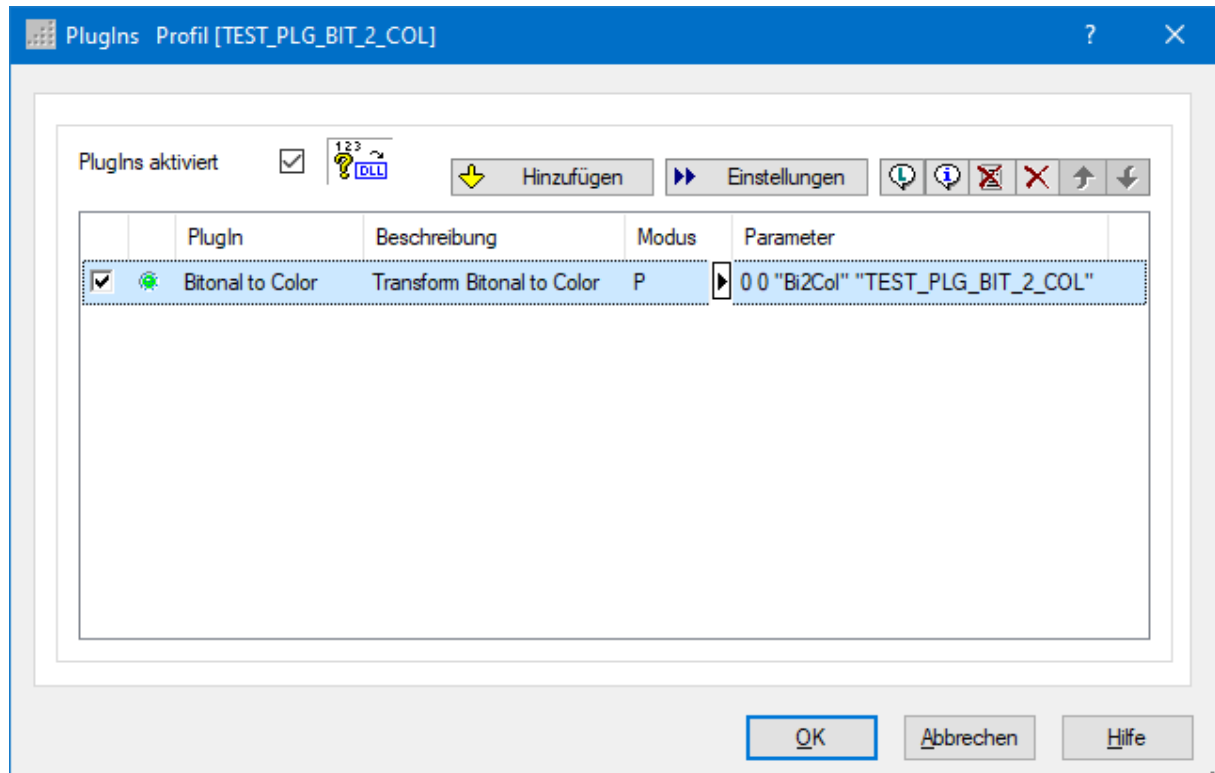


Selection of the PlugIn

Select the "Bit2Col" PlugIn. The PlugIn is now loaded for use within the base profile.

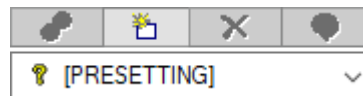
Please make sure that the check box "PlugIns activated" is checked, otherwise the PlugIns will not be used. The check box can only be activated if at least one PlugIn has been loaded.

The green point in the list of loaded PlugIn indicates that the PlugIn is ready for use. The entry in the Mode column shows the string "P". This means that this PlugIn works in process mode.



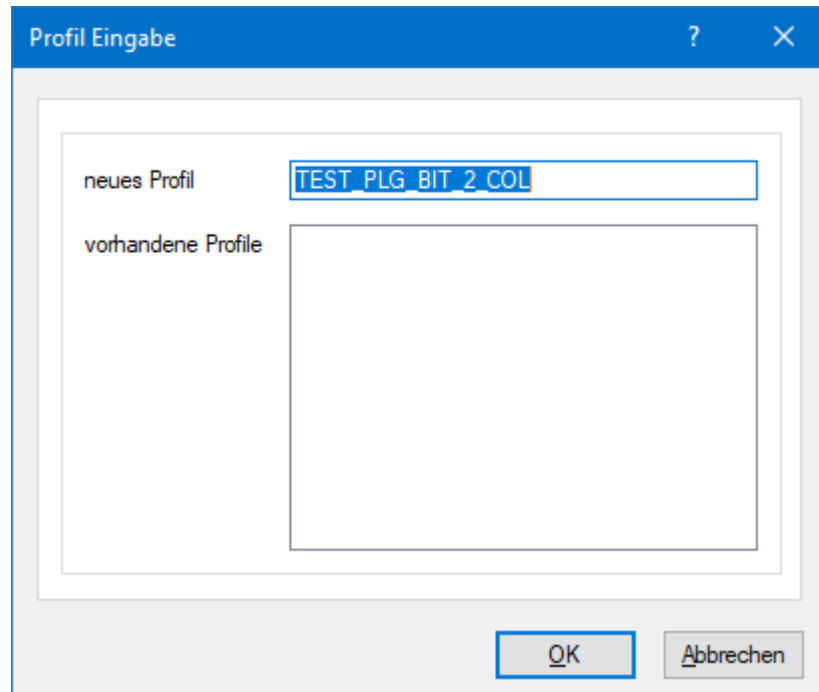
PlugIn in the list of loaded PlugIn

Now create a configuration by double-clicking in the cell for the "Parameter" column. The dialog for calling the PlugIn as a broker event or when changing selection opens. There are a number of buttons there:



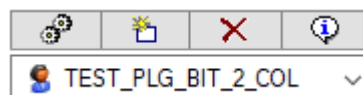
Creation of a new sub-profile

The only button available is the New button; use it to create a new sub-profile. You will be asked to enter a name for the configuration to be created.



Enter a new sub-profile

After creating the new sub-profile, the other buttons are now available:

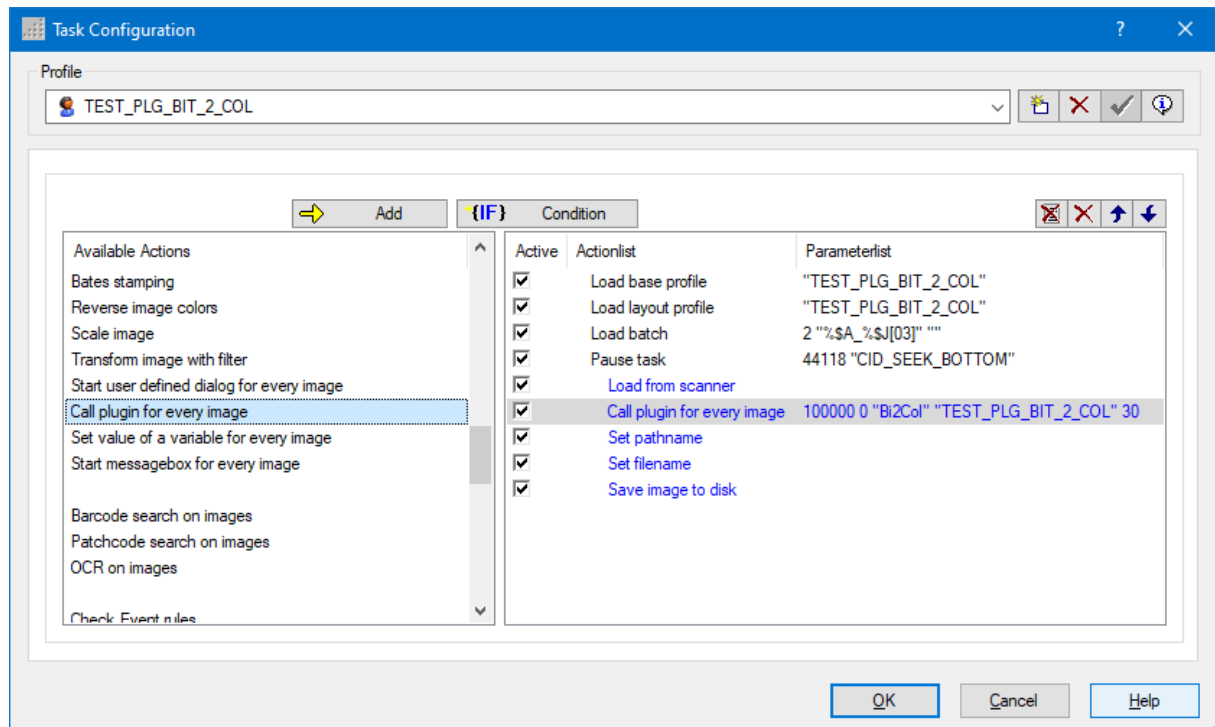


Manage sub-profiles

Nevertheless, there are no further configuration steps required here, because this PlugIn works with a fixed set of parameters.

1.2 Configuration in Task Profile

In the task profile, i.e. in the list of work instructions, the PlugIn can be inserted with the step "Call PlugIn for every image". Make sure that this step takes place after the image has been captured, here "Load from scanner":



Calling up the Plugin in the task profile

Since this Plugin works with images, you have to specify which images are to be used:

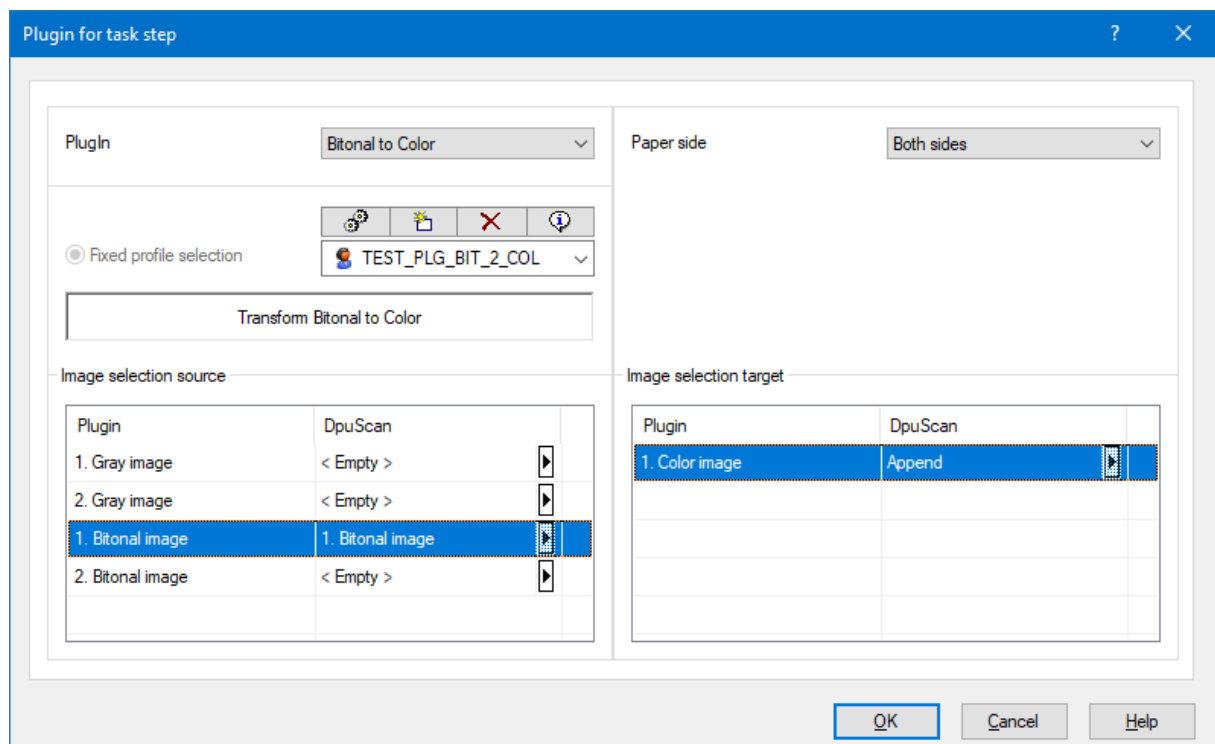


Image selection for task step

The images are assigned in the dialog at the bottom left. The Plugin can only process one black and white image at a time. Enter in the DpuScan column which image is to be transferred. The number of the

image does not indicate the position in the batch, but the position within a group of images. Please enter the **first black and white image** here

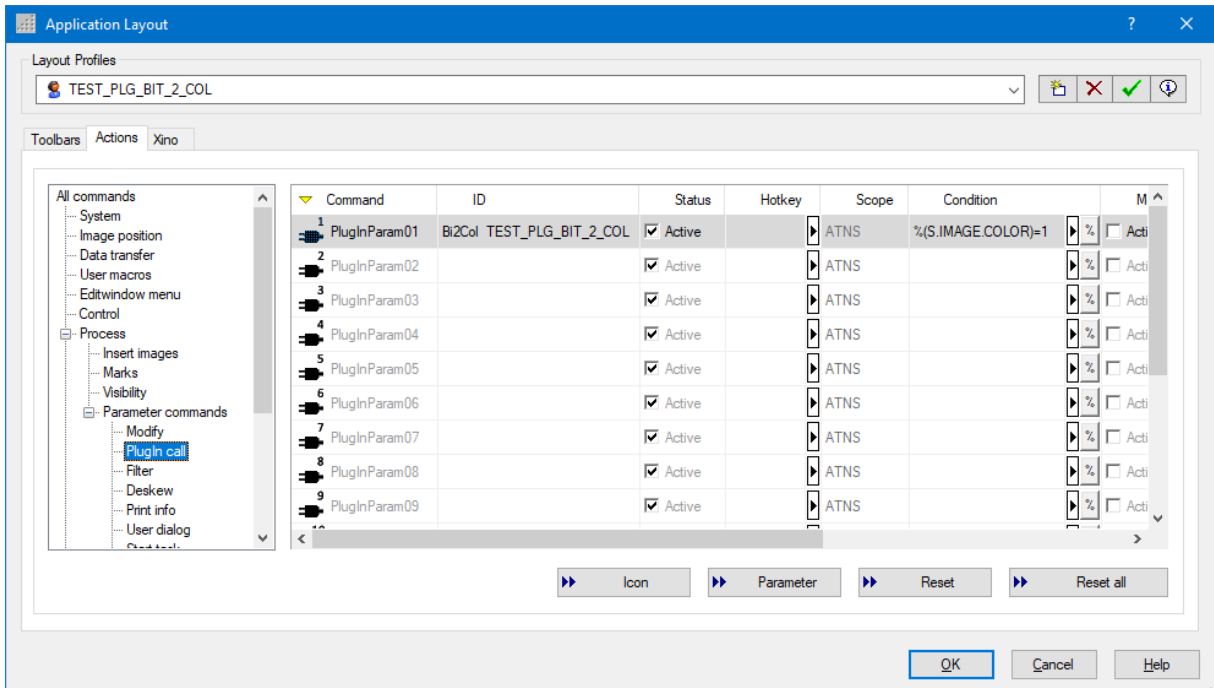
Select "**First color image append**" on the right-hand side to add the newly created image to the image group.

At the top right of the dialog you can restrict the transformation to the front side.

1.3 Configuration as Command

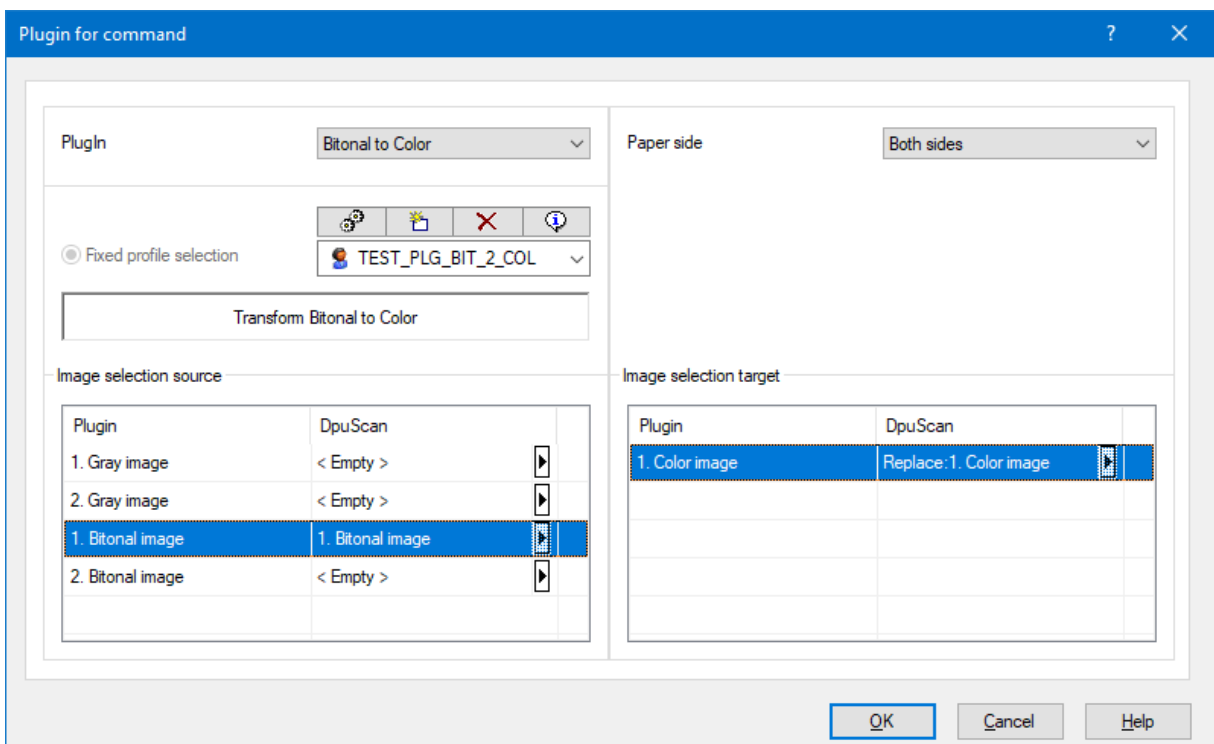
The PlugIn can also be used specifically on a selected image, e.g. if it was changed after loading. To do this, open the application layout and go to "Toolbars". Make sure that at least one other toolbar is available in addition to the menu bar.

Then scroll through "Actions" and assign a new **button**. To do this, select the branch Edit -> Parameter commands -> PlugIn call in the tree view on the left:



PlugIn call as a parameter command

A click on parameters or a double click on the Command column opens this dialog:



PlugIn call as a parameter command

In contrast to the [image selection in the task](#), select "**Replace 1st color image**" on the right-hand side.

After specifying these values, you should still prevent this PlugIn from being executed on a color image: To do this, set `%(S . IMAGE . COLOR)=1` in the Condition column.

Now you can assign a symbol image, a keyboard shortcut and various labels and place the button on the toolbar.

If this button is then pressed or the keyboard shortcut is typed, the PlugIn is called and the black and white image is converted again.

If the conversion is to take place as a **Macro**, i.e. as part of a sequence of instructions, select "User macros" in the tree and insert the PlugIn call as a command. In the same macro you can, for example, set a marker that states that the stack should be rebuilt before finalization.

1.4 Summary

Name of the Plugin	PlgBitToCol
Description	Convertes Black/White images into color images.
Revision	12/13/2021
DpuScan	Version 6.01 an higher
Plugin Files	PlgBitToCol.dll
Additional Engine	None
Chargeable	No
Can be used as task step	Yes
Can be used as macro command	Yes
Can show a window	No
Reacts on broker events	No
Reacts on selection changes	No
Input Variables	
None	
Output Variables	
None	

Index

- B -

Back sides 7

- C -

Call as a parameter command 10
Configuration as a command 10
Configuration in the Base Profile 5
Configuration in the task profile 7
Creation of a sub-profile 5

- E -

Editing a sub-profile 5

- O -

Overview 4

- S -

Select images 7
Selection of the PlugIn 5
Step in macro 10
Summary 12

- T -

Task step 7