



# DpuScan

Janich & Klass  
Computertechnik GmbH



## DpuScan 6.x

PlugIn Exe\_Plugin

Reference Manual

## Copyrights

© 1997 to 2022 DPU © Janich & Klass Computertechnik GmbH. All rights reserved.  
Printed in Germany. The information contained in this documentation is the property of DPU © Janich & Klass Computertechnik GmbH, Wuppertal. Neither receipt nor possession hereof confers or transfers any right to reproduce or disclose any part of the contents hereof, without the prior written consent of Janich & Klass, Wuppertal

## Trademarks

The DPU logo is a registered trademark of DPU © Janich & Klass Computertechnik GmbH. All other product names and logos are trademarks or registered trademarks of their representative companies.

## Disclaimer

The instructions and descriptions in this manual were accurate at the time of this manual's printing. However, we reserve the right to alter the description and/or the product at anytime without prior notice. As per the actual state of software technique it is not possible to develop programs that will work trouble-free under all conditions and in any configuration. DPU © Janich & Klass Computertechnik GmbH assume no liability for damages incurred directly or indirectly from errors, omissions, or discrepancies between this manual and the product.

## Actuality

It may happen that a more recent version of this manual for DpuScan is available for download from the Internet. Therefore, it is recommended that you should compare the version by means of the date printed on this page with the version on the Internet. You should please use the most up-to-date version of the manual. The actual version of this First Steps Manual is found on the Web at the following address:

[https://www.dpuscan.com/pdf/en\\_manual/DpuScan-Reference-Manual.pdf](https://www.dpuscan.com/pdf/en_manual/DpuScan-Reference-Manual.pdf)

## Table of Contents

<b>1 Overview</b>	<b>4</b>
1.1 Configuration in the base profile .....	5
1.2 Configuration of the PlugIn .....	7
1.3 Configuration in the task profile .....	9
1.4 Configuration as a command .....	10
1.5 Displayed windows and return values .....	10
1.6 Summary .....	12

# 1 Overview

With the PlugIn Exe\_PlugIn you can start an external program from the scan program

## Requirements for using the PlugIn

The PlugIn can be used in all licensed versions of DpuScan from version 5.01. No additional license is required for this PlugIn.

## How the PlugIn works

The PlugIn is called up as a work step in the task list or as a command in a user macro. It starts a program in windowed mode and waits for that program to exit.

[Configuration in the base profile](#)

[Configuration of the PlugIn](#)

[Configuration in the task profile](#)

[Configuration as a command](#)

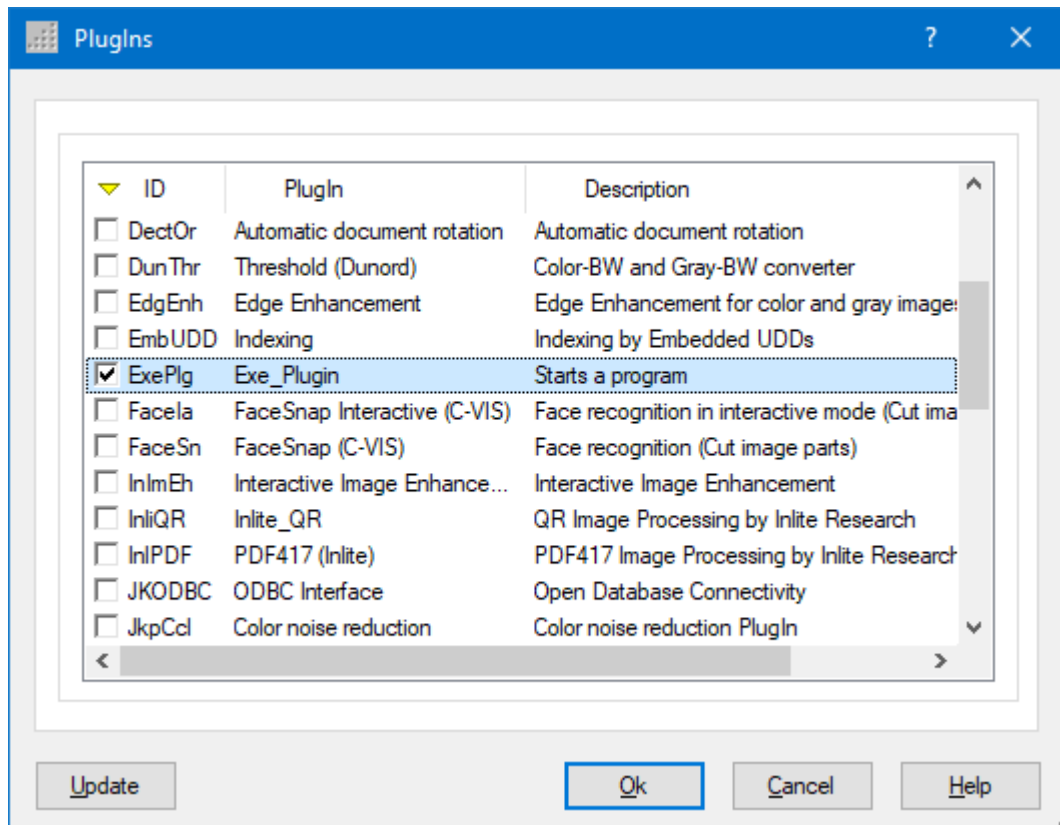
[Displayed windows and return values](#)

[summary](#)

## 1.1 Configuration in the base profile

The PlugIn has to be loaded and configured within the base profile. To do this, open the **base profile configuration**, select the **Process** tab and click the **Plugins** button.

The Add button takes you to the selection of the available Plugins.

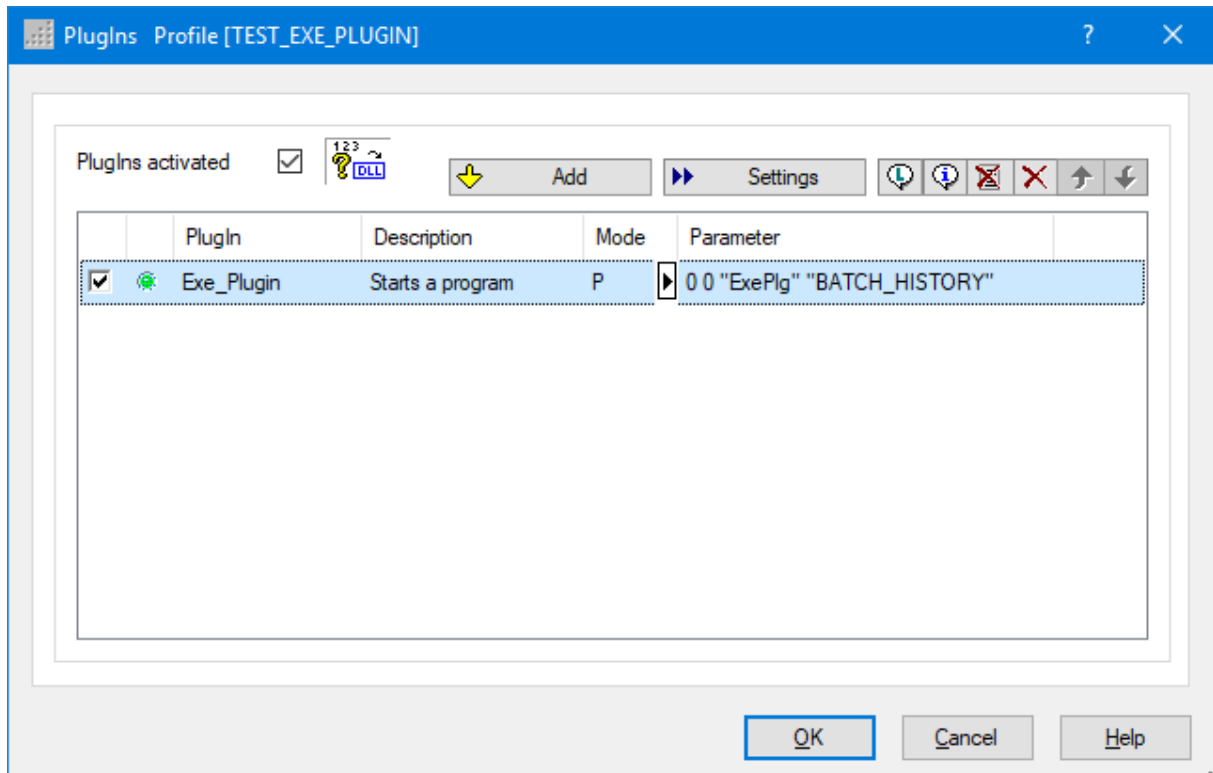


Auswahl des Plugins

Select the PlugIn "Exe\_Plugin". The PlugIn is now loaded for use within the base profile.

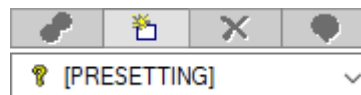
*Please make sure that the check box "Plugins activated" is checked, otherwise the plugins will not be used. The check box can only be activated if at least one PlugIn has been loaded.*

The green point in the list of loaded PlugIns indicates that the PlugIn is ready for use. The entry in the Mode column shows the string P. This means that this PlugIn works in process mode.



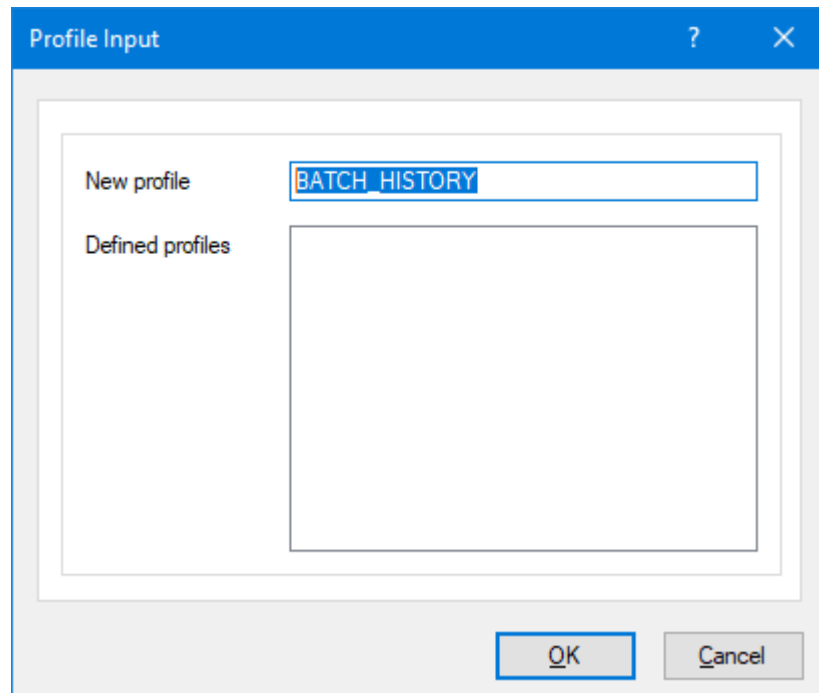
PlugIn in the list of loaded PlugIns

Now create a configuration by double-clicking in the cell for the "Parameter" column. The dialog for calling the PlugIn as a broker event or when changing selection opens. There are a number of buttons there:



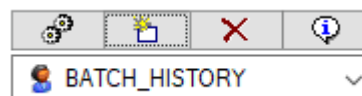
Creation of a new sub-profile

The only button available is the New button; use it to create a new sub-profile. You will be asked to enter a name for the configuration to be created.



Enter a new sub-profile

After creating the new sub-profile, the other buttons are now available:

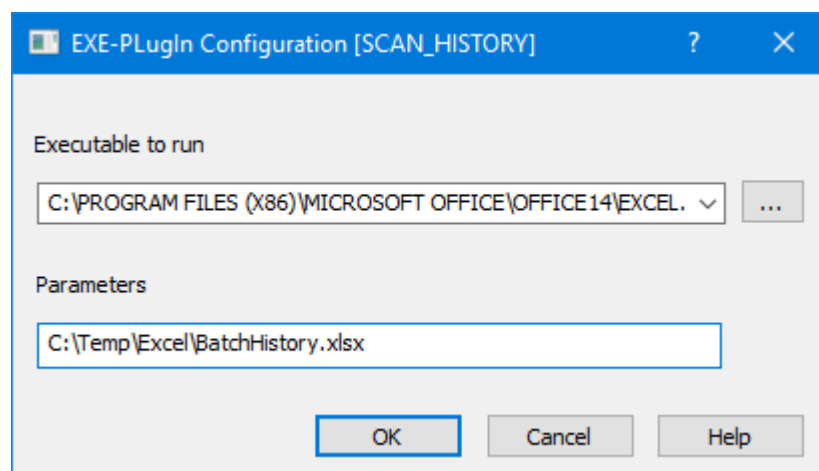


Manage sub-profiles

Click the Change button with the cogs. A [separate dialog](#) is available for the actual configuration of the PlugIn. After you have made the settings there, you can exit all open dialogs with OK.

## 1.2 Configuration of the PlugIn

The configuration dialog box offers these controls:



Configuration

Parameter

**Executable to run**

Enter the program that is to be executed here. If necessary, use the key opposite to search for the program.

Use quotation marks if the path contains spaces.

Enter a minus as the first character if the scan program should *not wait* for the called program.

**Notes:**

The name of the program is sufficient for system programs, e.g. simply "Notepad"

If you want to execute a command or batch file, the path to this file is sufficient. For other scripts such as Powershell or VBScript, the corresponding scripting host must be specified, e.g. "WScript" and the actual script as an argument.

The PlugIn creates a list of the most recently used programs.

[Click here to search for the program.](#)

**Parameters**

Enter the parameters that your program expects here.

At the bottom there are the usual buttons:

**OK**

Closes the dialog box and saves all search parameters.

**Cancel**

Drops all changes and leaves the dialog box.

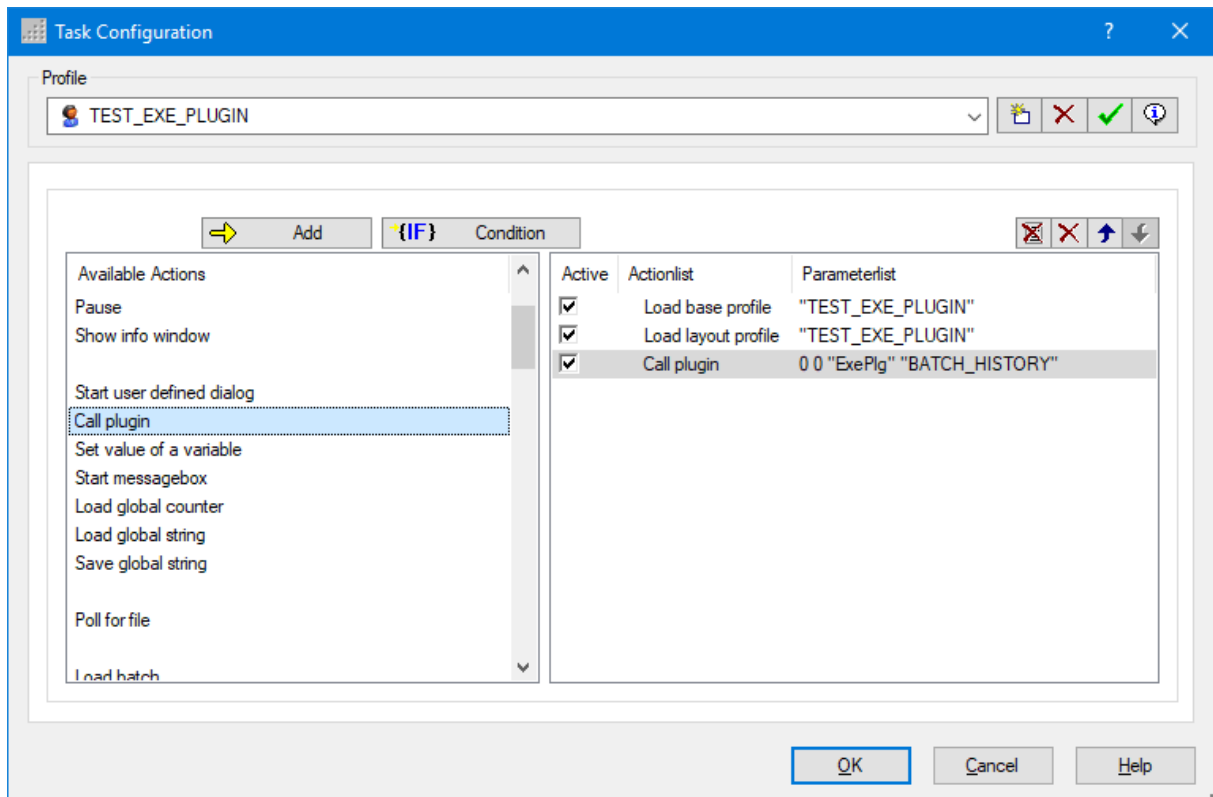
**Help**

Opens the help file for PlugIn Exe\_Plugin.



### 1.3 Configuration in the task profile

In the task profile, i.e. in the list of work instructions, the Plugin can be inserted with the step "Call Plugin" or within the scan loop with "Call Plugin for each image".



Calling the Plugin in the task profile

In the subsequent dialog, specify which sub-profile is to be used:

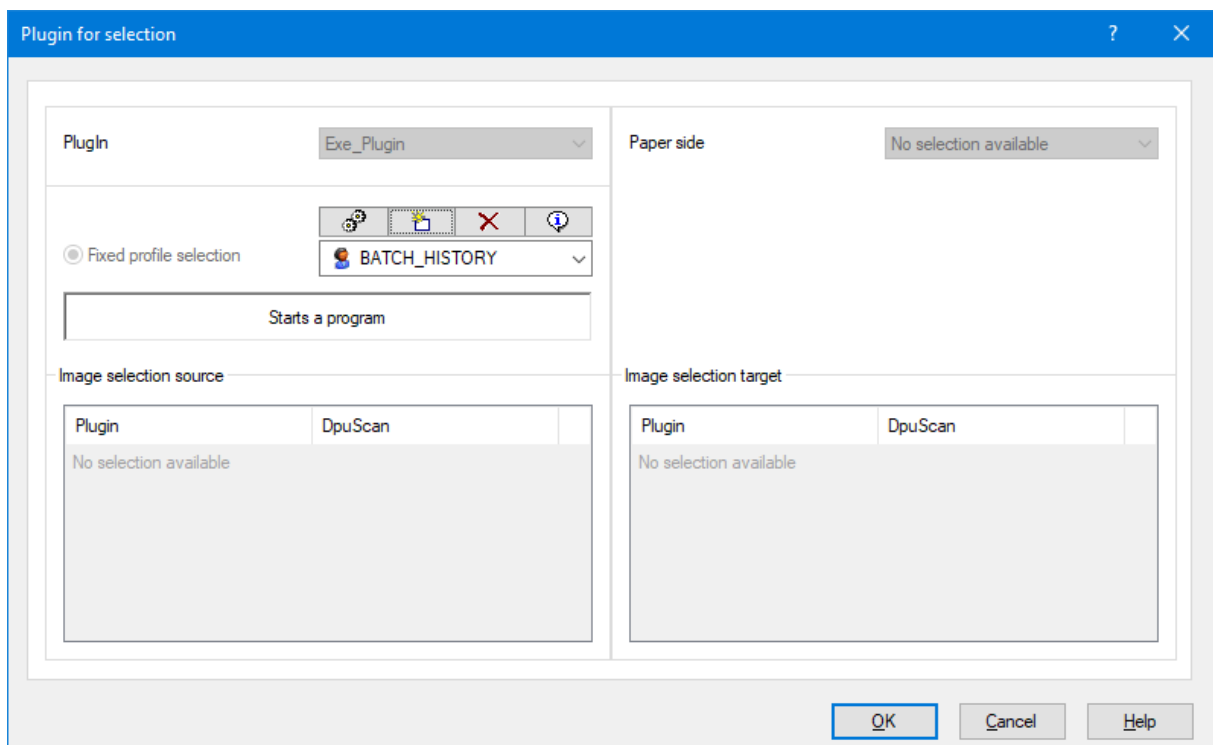


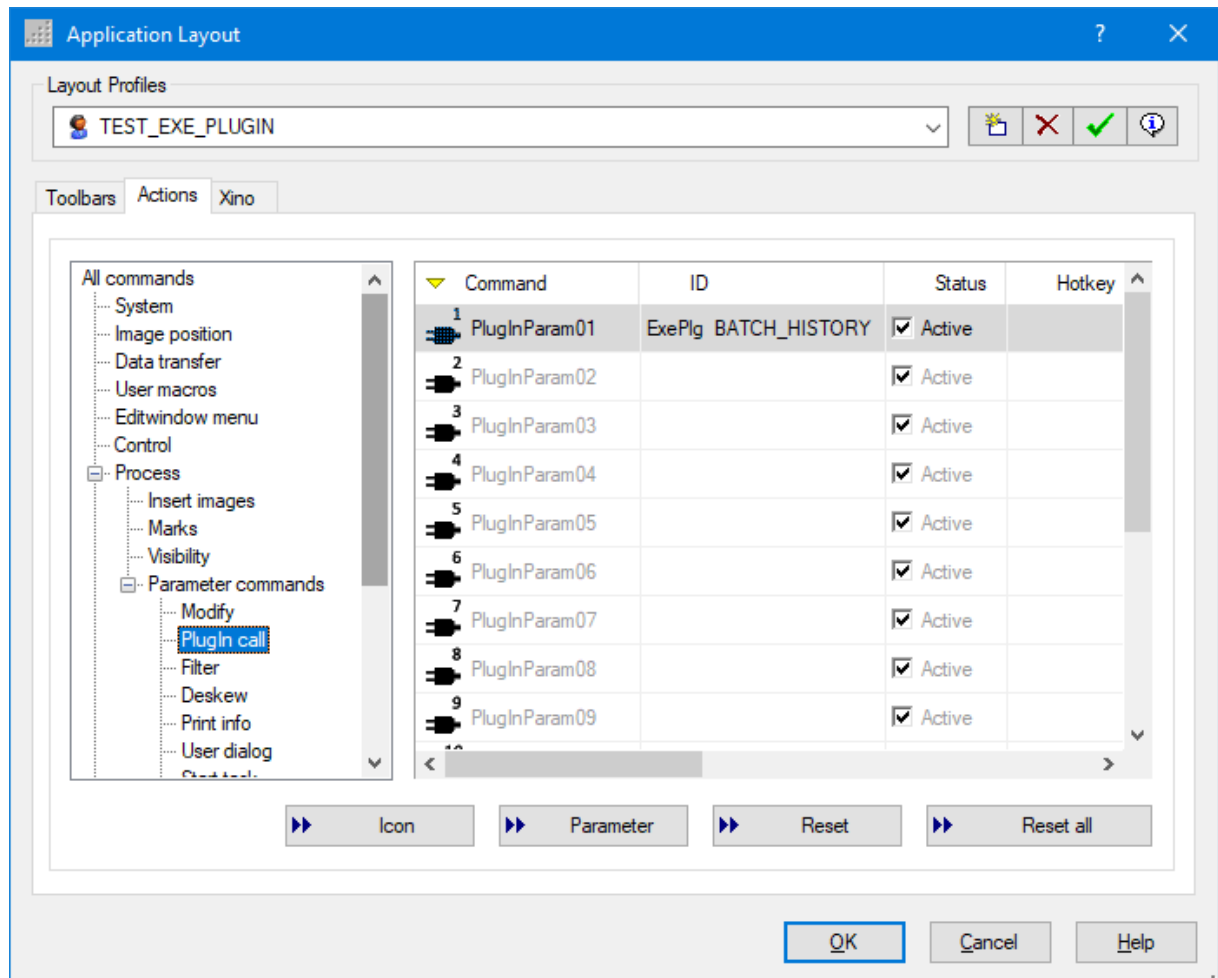
Image assignment for Plugin call in the task

Further details are not required.

## 1.4 Configuration as a command

The PlugIn can also be used during the scan pause. To do this, open the application layout configuration and go to "Toolbars". Make sure that at least one other toolbar is available in addition to the menu bar.

Then scroll through "Actions" and assign a new **button**. To do this, select the branch Edit -> Parameter commands -> PlugIn call in the tree view on the left:



PlugIn call as a parameter command

A click on parameters or a double click on the Command column opens the [familiar dialog](#) for selecting the PlugIn and sub-profile. If this button is then pressed, the PlugIn is triggered and calls the given program.

If the search is to be carried out as a **macro**, i.e. as part of a sequence of instructions, select User macros in the tree and insert the PlugIn call as a command. In the same macro you can, for example, set a marker that states that the stack should be rebuilt before finalization.

## 1.5 Displayed windows and return values

The plug-in does not display its own windows during operation, but the called program itself can display windows.

These variables are returned:

<code>%(J.EXE_PLG_CALLNAME)</code>	Name of the program which was called
<code>%(J.EXE_PLG_CALLPARAMS)</code>	Given parameters for the program
<code>%(J.EXE_PLG_RETURN)</code>	Return value after the call

## 1.6 Summary

<b>Name of the Plugin</b>	Exe_Plugin
<b>Description</b>	Starts a programm
<b>State</b>	2/2/2022
<b>DpuScan</b>	Version 6.01 and higher
<b>Plugin Files</b>	Exe_Plugin.dll, Exe_Plugin_07.lng
<b>Additional Engine</b>	none
<b>Chargeable</b>	No
<b>Can be used as task step</b>	Yes
<b>Can be used as macro command</b>	Yes
<b>Can show a window</b>	No
<b>Reacts on broker events</b>	No
<b>Reacts on selection changes</b>	No
<b>Input Variables</b>	
<b>%( J . EXE_PLG_NAME )</b>	Name of the called programm or full path to it
<b>%( J . EXE_PLG_PARAMS )</b>	Parameters to overhand
<b>Output Variables</b>	
<b>%( J . EXE_PLG_CALLNAME )</b>	Name of the program wich was called
<b>%( J . EXE_PLG_CALLPARAMS )</b>	Given parameters for the program
<b>%( J . EXE_PLG_RETURN )</b>	Return value after the call

# Index

## - B -

Back sides 9

## - C -

Call as a parameter command 10  
Configuration as a command 10  
Configuration in the basic profile 5  
Configuration in the task profile 9  
Configuration of the PlugIn 7  
Creation of a sub-profile 5

## - D -

Display 10  
Don't wait for the program 7

## - E -

Editing a sub-profile 5  
Executable to run 7

## - O -

Overview 4

## - P -

Parameters 7

## - R -

Return values 10

## - S -

Select images 9  
Selection of the PlugIn 5  
Step in macro 10  
Summary 12

## - T -

Task step 9

## - W -

Wait for the program 7  
Windows 10